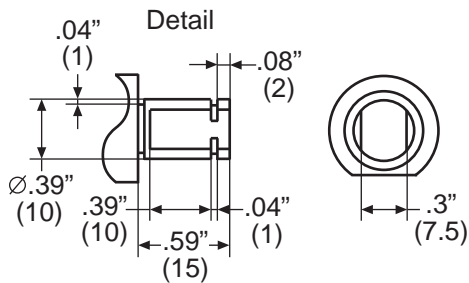
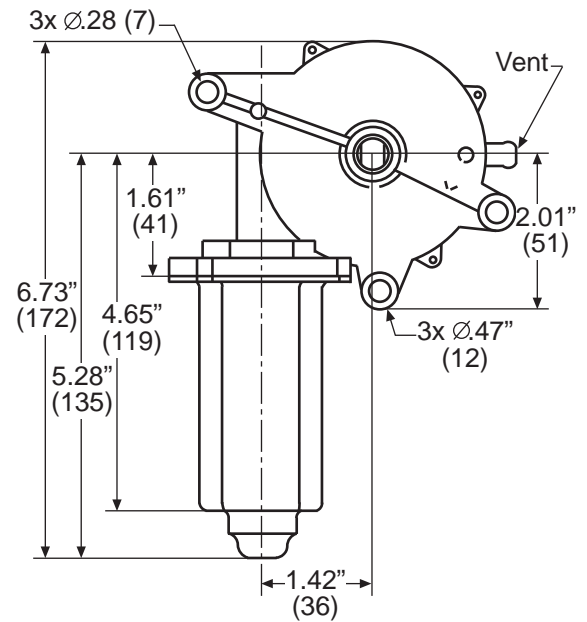
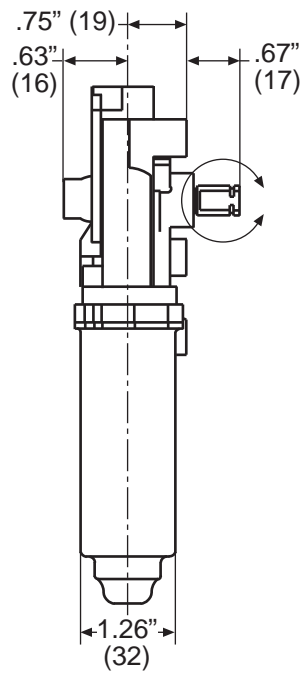
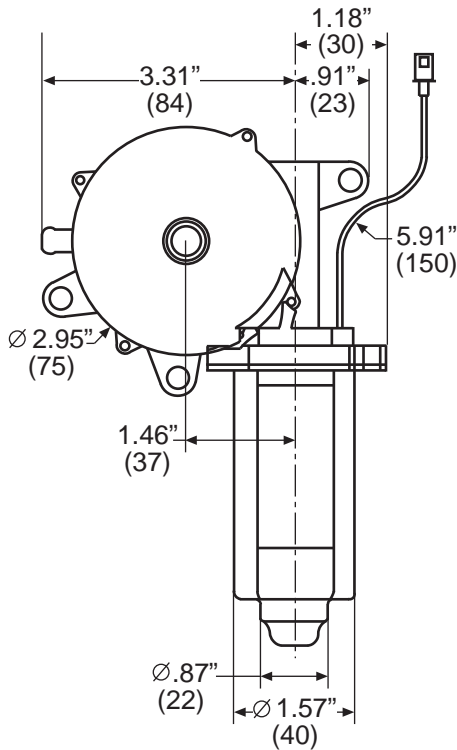
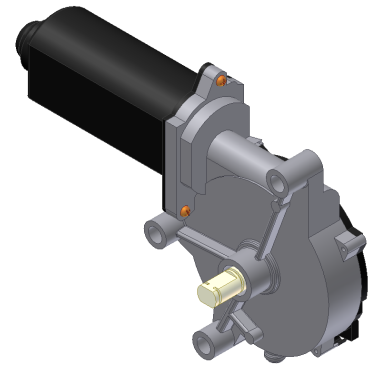
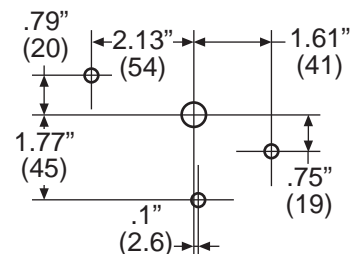


# 212-3001

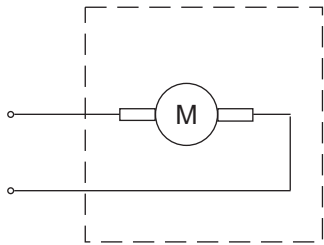
- 12 Nm stall torque motor
- 12V reversible
- Water resistant
- For use with gears, sprockets, and drives
- 24V available upon request



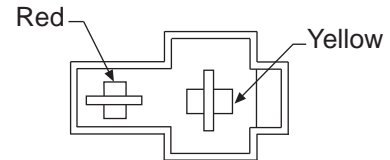
Mating snap ring: 414-1022



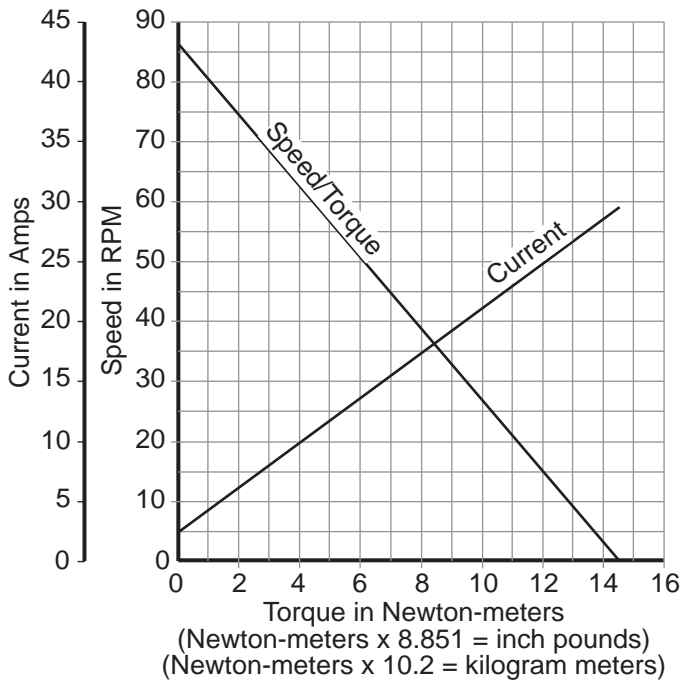
Mounting pattern



Red (+), Yellow (-) = CW (preferred rotation)  
 Yellow (+), red (-) = CCW



Terminal housing: 317-1057  
 Terminal: 317-1054  
 Mate terminal housing: 317-1056  
 Mate terminal: 317-1055



LOW SPEED, CW OUTPUT SHAFT ROTATION		
DATA POINT	DATA CURVE	VALUE RANGE
NO LOAD	CURRENT (A)	2.5 - 2.0
	SPEED (rpm)	84.5 - 69.2
STALL LOAD	TORQUE Nm	16.4 - 13.4
	CURRENT (A)	27.4 - 22.4
PEAK POWER	POWER (W)	36.8 - 30.1
	TORQUE (Nm)	8.73 - 7.14
NOMINAL (PEAK EFFICIENCY)	POWER (W)	24.3 NOMINAL
	SPEED (rpm)	60.2 NOMINAL
	CURRENT (A)	7.0 NOMINAL
	TORQUE (Nm)	4.1 NOMINAL
HIGH SPEED, CCW OUTPUT SHAFT ROTATION		
DATA POINT	DATA CURVE	VALUE RANGE
NO LOAD	CURRENT (A)	2.6 - 2.1
	SPEED (rpm)	85.0 - 69.5
STALL LOAD	TORQUE Nm	16.4 - 13.4
	CURRENT (A)	28.3 - 23.2
PEAK POWER	POWER (W)	34.9 - 28.6
	TORQUE (Nm)	8.2 - 6.7
NOMINAL (PEAK EFFICIENCY)	POWER (W)	22.3 NOMINAL
	SPEED (rpm)	61.1 NOMINAL
	CURRENT (A)	6.4 NOMINAL
	TORQUE (Nm)	3.5 NOMINAL