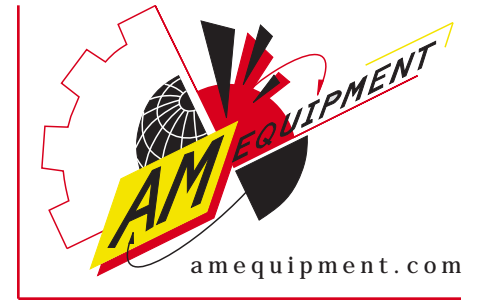


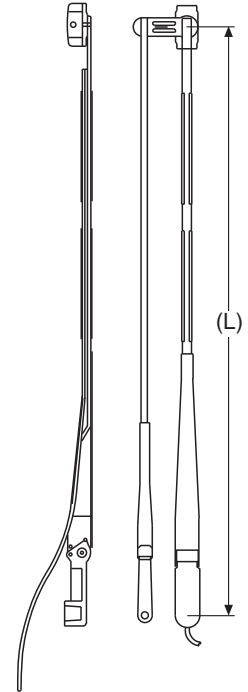
212 Series Pantograph Wiper Arms

- Made of corrosion-resistant stainless steel flatwire
- Flip back for cleaning
- Includes blade mounting bolt (402-1111) and nut (402-1112)



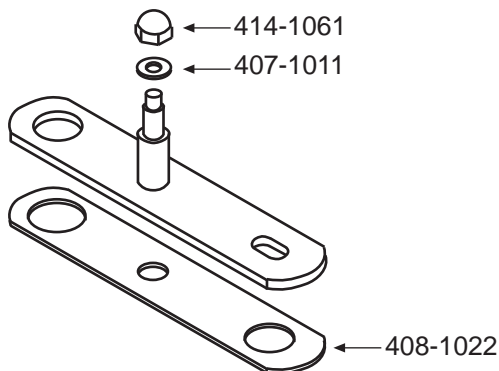
Pantograph arms, dry	
Part #	Arm length (L)
341-1140	14" (355)
341-1150	15" (380)
341-1160	16" (405)
341-1170	17" (430)
341-1180	18" (455)
341-1190	19" (483)
341-1200	20" (508)
341-1210	21" (533)
341-1220	22" (559)

Pantograph arms, wet	
Part #	Arm length (L)
341-3140	14" (355)
341-3150	15" (380)
341-3160	16" (405)
341-3170	17" (430)
341-3180	18" (455)
341-3190	19" (483)
341-3200	20" (508)
341-3210	21" (533)
341-3220	22" (559)



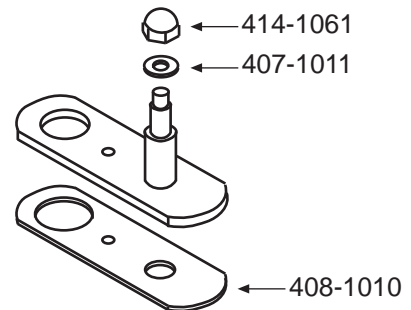
To convert dry arms to wet arms, use wet kit: part #313-1008

Pantograph adapter for mounting with through-bolt in fiberglass and glass



Pantograph adapter kit 305-1021 includes adapter, cap nut (414-1061), washer (407-1011), and gasket (408-1022)

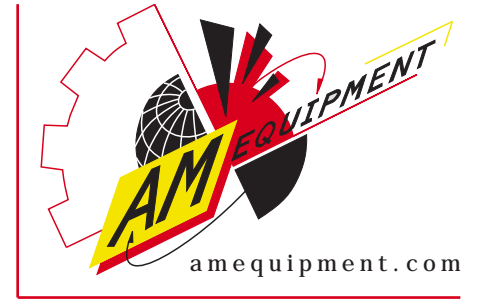
Pantograph adapter for mounting in metal with self-tapping screw



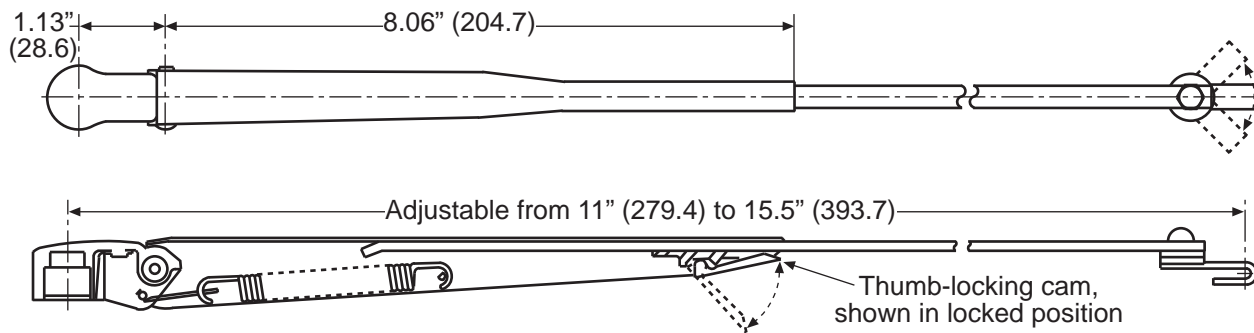
Pantograph adapter kit 305-1015 includes adapter, cap nut (414-1061), washer (407-1011), and gasket (408-1010)

212 Series Adjustable Radial Wiper Arms

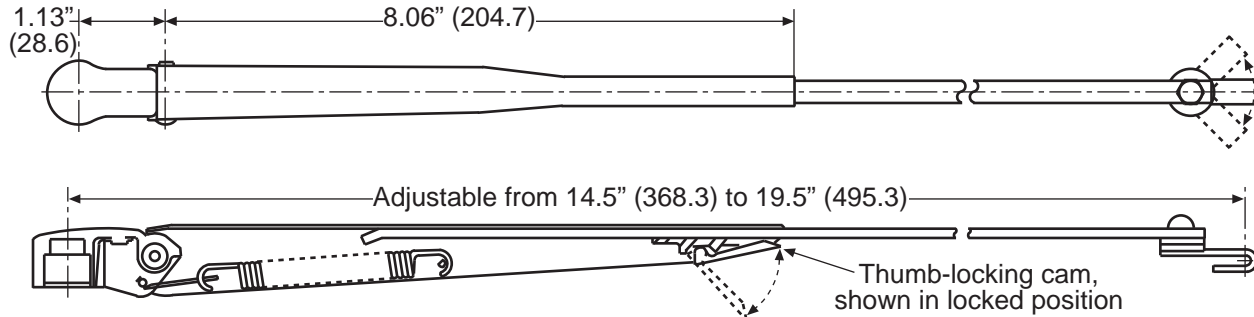
- Made of corrosion-resistant stainless steel flatwire
- Flip back for cleaning
- Hook blade connection
- Rotatable head
- Black finish
- Two sizes available
- Compatible with 208 and 212 motors



Part #341-5001



Part #341-5002

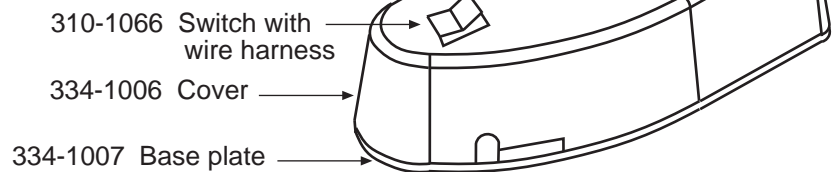


Graphite black motor cover

334-1008 assembly includes:
 334-1006 cover
 334-1007 base plate
 310-1066 switch with wire harness

334-1009 assembly includes:
 334-1006 cover
 334-1007 base plate

334-1012 assembly: same as 334--1009
 only in Sand color.



212 Series Flex Blades

- Flexible for flat or curved glass
- Refillable molded wiper elements
- Galvanized, powder coated frames for corrosion resistance



Part #	Blade length (L)
302-1120	12" (305)
302-1130	13" (330)
302-1140	14" (355)
302-1150	15" (380)
302-1160	16" (405)
302-1170	17" (430)
302-1180	18" (455)
302-1190	19" (483)
302-1200	20" (508)
302-1210	21" (533)
302-1220	22" (559)

