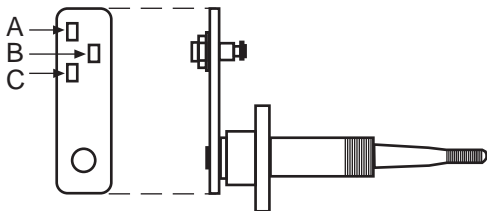


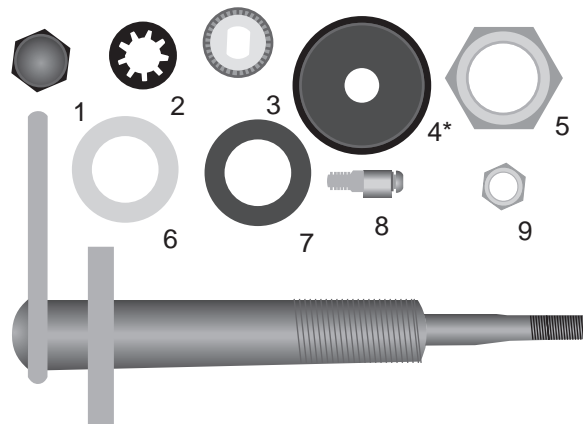
## 230 Series Pin-Type Pivot Shafts

- 5/8" (17.3 mm) shaft body diameter fits into 3/4" (19 mm) bulkhead hole
  - Length determined by "A" reference dimension of shaft body
  - Three pin slots for different sweep angles (A, B, and C)
  - Stainless steel shaft and components for corrosive environments
- \*All hardware numbered below is included in your shaft assembly order and is available individually



1. 407-1010 black cap nut
2. 407-1023 lockwasher
3. 407-1002 knurl
4. 407-1017 rubber cap\*
5. 407-1007 nut
6. 407-1015 metal washer
7. 407-1012 rubber washer
8. 407-1005 pin
9. 414-1124 locknut

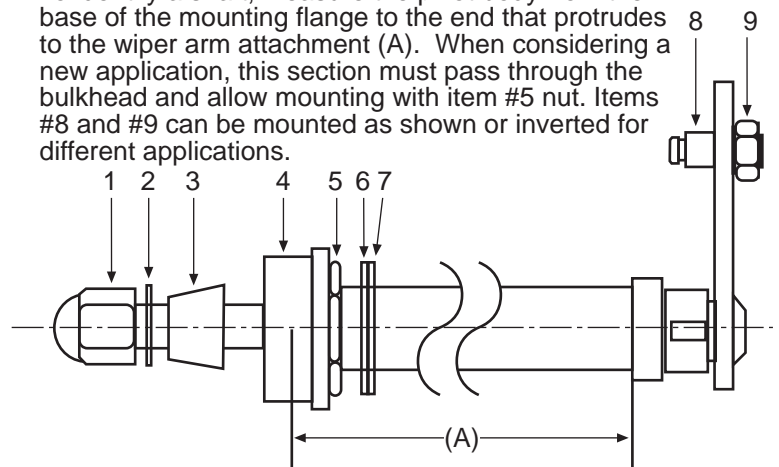
\*Optional 1" (25.4) inside height rubber cap: #407-1072



### Complete shaft assemblies:

- 304-1200 5/8" (16 mm)
- 304-1201 1" (25 mm)
- 304-1202 1 1/4" (32 mm)
- 304-1203 2" (51 mm)
- 304-1204 2 1/2" (64 mm)
- 304-1205 3" (76 mm)

To identify a shaft, measure the pivot body from the base of the mounting flange to the end that protrudes to the wiper arm attachment (A). When considering a new application, this section must pass through the bulkhead and allow mounting with item #5 nut. Items #8 and #9 can be mounted as shown or inverted for different applications.



**Q.** How do I determine what shaft length I need?

**A.** Measure the thickness of material the shaft must pass through on the vehicle. Add on 3/8" (10mm) for the outside holding nut and washers. If pantograph arms are used, add another 3/8" (10 mm). Add the measurements and use the next longer shaft.

\*\*Example: 1/2" (12mm) steel plate vehicle bulkhead + 3/8" (10mm) nut and washers + 3/8" (10mm) pantograph = 1 1/2" (32mm), means you would need the 2" (50mm) shaft. The called shaft length is never the overall length, rather it refers to the portion of the shaft that passes through the vehicle (dimension A).