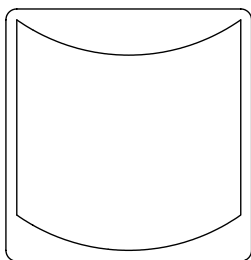
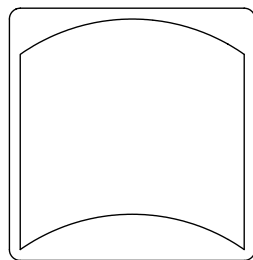


### Pantograph



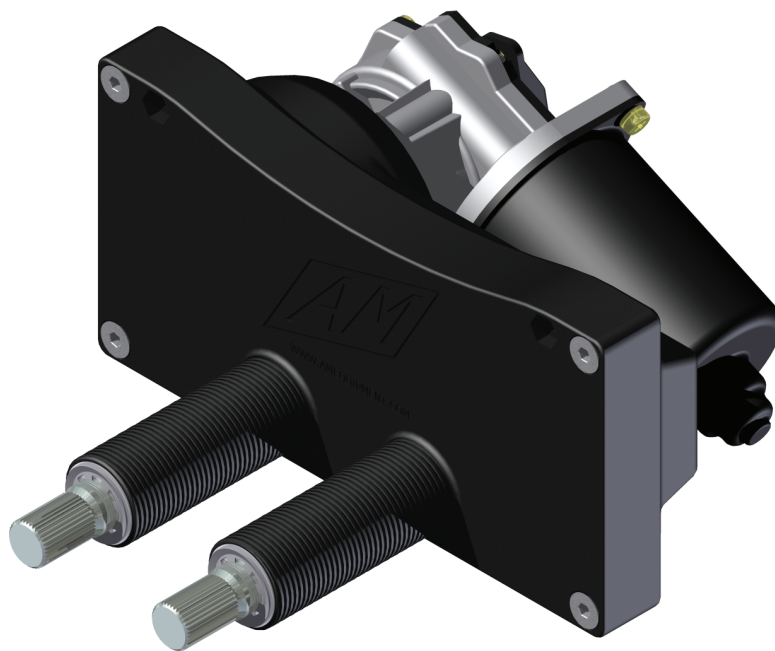
Top Mount



Bottom Mount

### 2D-1

#### Double Driver Wiper System



- Needle bearings and Igus link bushings for minimal energy loss to friction.
- 35Nm dynamic park 2-speed motor with RFI/EMI suppression.
- FMVSS compliant.
- System installation requires no secondary adjustments.
- Integrated knurl on pivot shafts.
- E-Coated surface for rust and corrosion resistance.

#### *Presenting the latest in single-motor, double-driver wiper technology!*

AM Equipment's 2D Wiper System is built for superior durability. SAE tested to over 2.1 million cycles.

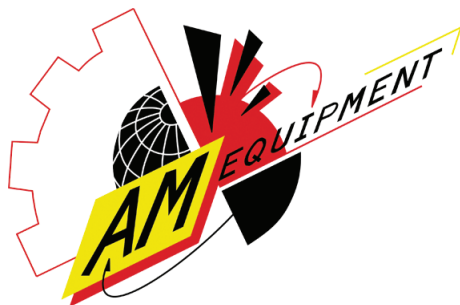
***"Quality is our driving force"***  
— AM Equipment President, Ted Powell

In a world of many choices, AM Equipment offers the best in technology development, production, and cost reduction. AM Equipment manufactures electric motors and motor systems that are the power within the finest vehicles and machines made today.

#### **Our Mission**

AM Equipment designs and manufactures windshield wiper systems, motor systems, and electrical components for recreational, industrial, marine, heavy trucking, and mass-transit vehicles world-wide. AM Equipment is committed to the improvement of all its processes and to increasing product value while decreasing cost. We, at AM Equipment, hold ourselves accountable to our customers and to the successful application and continued use of all our products.

ISO 9001:2008 Certified



# AM Equipment

## 2D-1

### Double Driver Wiper System

Compatible with both the AME Standard-Duty and Heavy-Duty Wiper Arms

Mounting holes for available for added mounting flexibility

76mm pivot shafts allow mounting through bulkheads up to 2".

Available System Options	
Power	Available in 12 or 24 volt configurations
Sweep Angles	Pantograph patterns from 50 to 90 degrees*
Pivot Shafts	76mm
Arms	Standard or Heavy Duty Double Driver
Upgrades	Stainless-steel shafts & sealing to IP55
* Sweep limited to 80 degrees with heavy duty arm	

High-efficiency 35Nm 2-speed motor with RFI/EMI suppression

17mm pivot shafts provide improved torsional rigidity

US Patent #11/440.608

30mm pivot body provide improved mounting strength

#### APPLICATIONS

- Bus & Coach
- Rail
- Marine
- Industrial Cab
- Commercial Vehicles
- Agricultural Vehicles