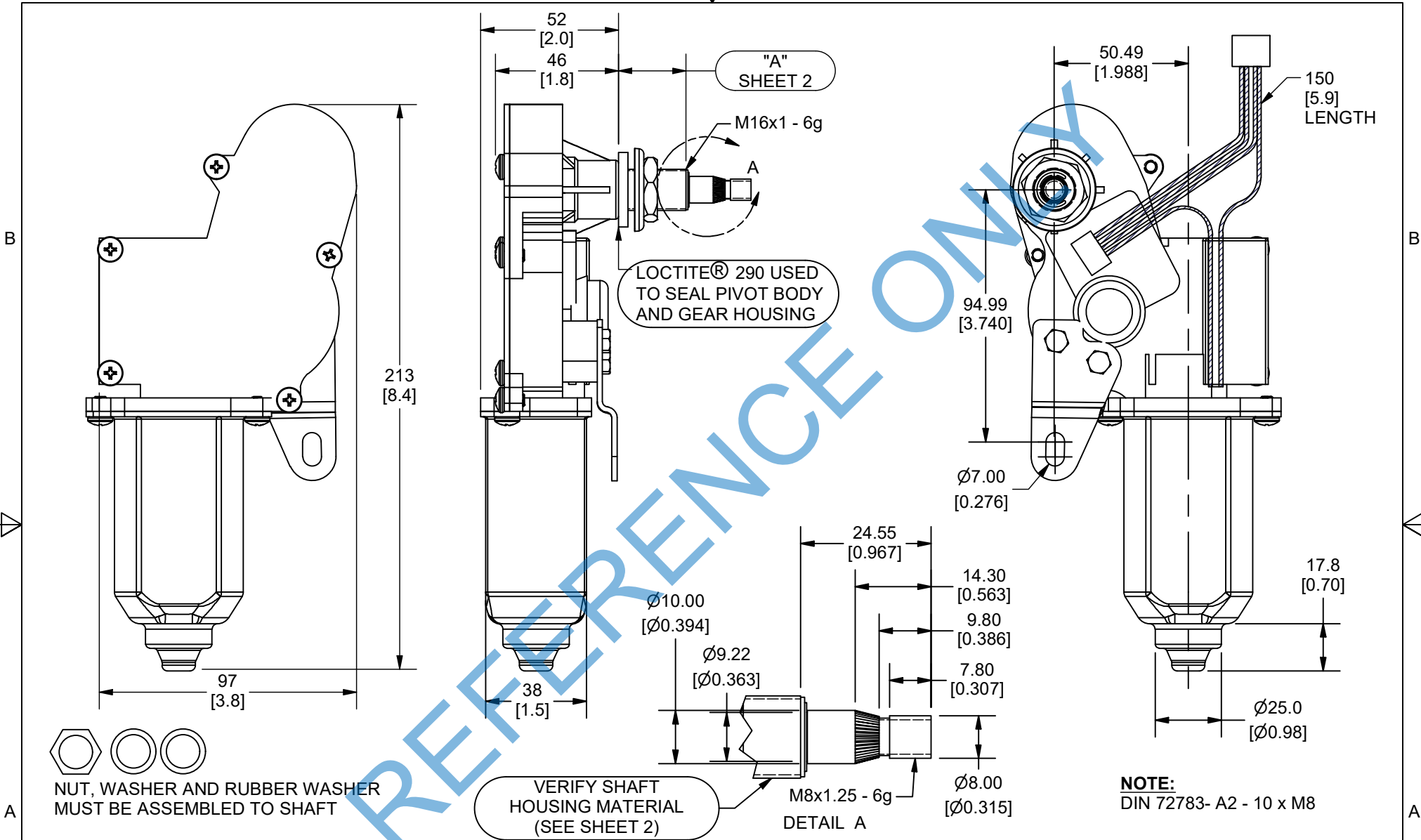


2

1



Dimensions are in: MM [INCHES]

Project	N/A	Drafted by	Revised by	Checked by	Approved by	Material Specification	N/A	Finish Specification	PAINT WITH BLACK POLYURETHANE		
		<i>JA</i> 3/3/2023		<i>RR</i> 3/3/2023	<i>AS</i> 3/3/2023				Title/Name		
									Motor, Wiper, 12Nm, 12V, M8 DIN		
									Part Number	Revision	Sheet
									212-DDDD	0	1 OF 3
										3/3/2023	

OVALS ARE FOR INCOMING INSPECTION CHECKING PROCESSES

UNLESS OTHERWISE SPECIFIED

TOLERANCES IN INCHES MM

1 PLACE DEC. = N/A ±0.25

2 PLACE DEC. = ±0.01 ±0.13

3 PLACE DEC. = ±0.005 ±0.08

4 PLACE DEC. = ±0.0025 N/A

ANGULAR DIM. = ±1°

DO NOT SCALE DRAWING

WORK TO GIVEN DIMENSIONS



AM EQUIPMENT

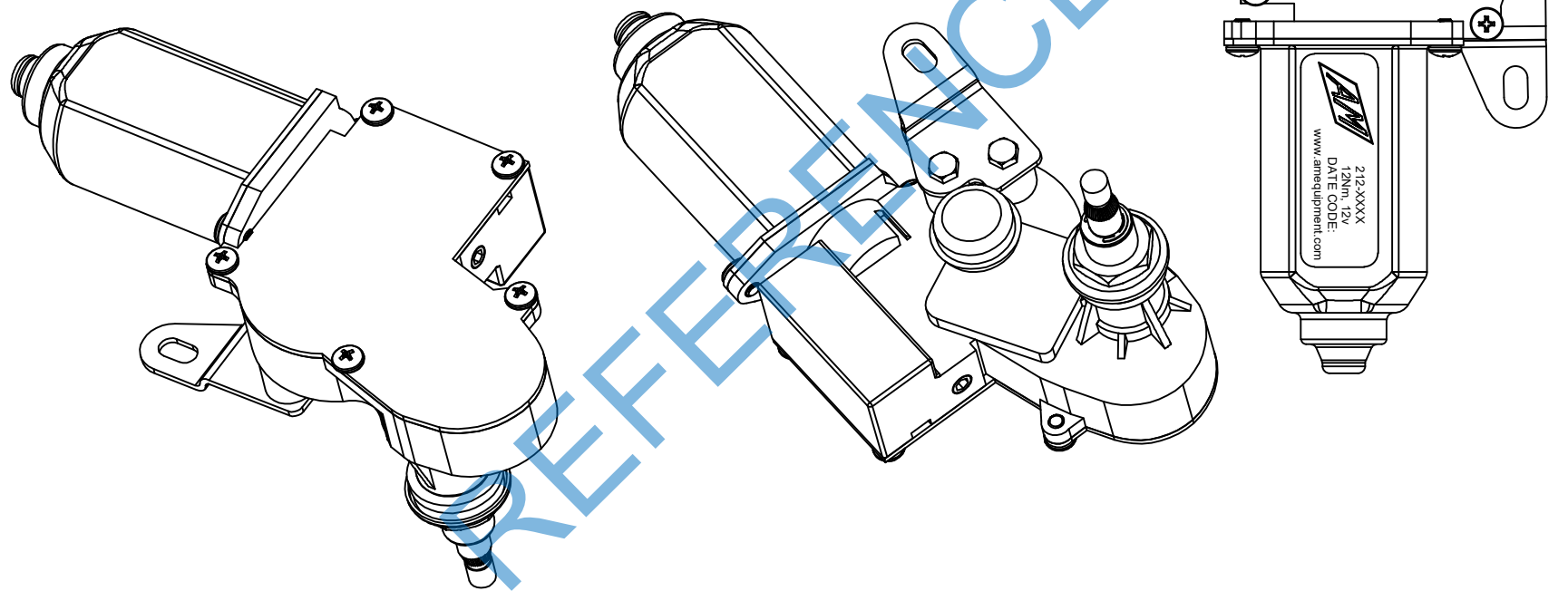
Jefferson, Oregon 97352
www.amequipment.com


THIS DRAWING IS THE SOLE PROPERTY OF AM EQUIPMENT AND CANNOT BE REPRODUCED IN ANY WAY WITHOUT THE EXPRESS WRITTEN PERMISSION OF AM EQUIPMENT

2

1

PART #	SWEEP ANGLE	A mm (in)	SHAFT HOUSING MATERIAL
212-1005	65°	25 (1)	BRASS
212-1006	85°	25 (1)	BRASS
212-1007	100°	25 (1)	BRASS
212-1008	110°	25 (1)	BRASS
212-1009	65°	50 (2)	BRASS
212-1010	85°	50 (2)	BRASS
212-1011	100°	50 (2)	BRASS
212-1012	110°	50 (2)	BRASS
212-1013	65°	75 (3)	BRASS
212-1014	85°	75 (3)	BRASS
212-1015	100°	75 (3)	BRASS
212-1016	110°	75 (3)	BRASS



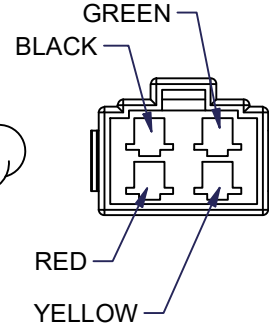
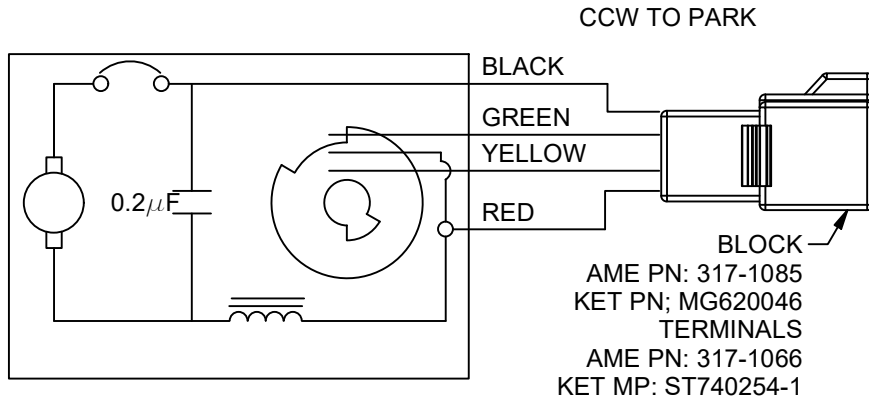
Project	N/A	Drafted by	JA 3/3/2023	Revised by		Checked by	RR 3/3/2023	Approved by	AS 3/3/2023	Material Specification	N/A	Finish Specification	PAINT WITH BLACK POLYURETHANE				
Dimensions are in: MM [INCHES]	OVALS ARE FOR INCOMING INSPECTION CHECKING PROCESSES	UNLESS OTHERWISE SPECIFIED		TOLERANCES IN		INCHES		MM		 <p>AM EQUIPMENT Jefferson, Oregon 97352 www.amequipment.com</p> <p>THIS DRAWING IS THE SOLE PROPERTY OF AM EQUIPMENT AND CANNOT BE REPRODUCED IN ANY WAY WITHOUT THE EXPRESS WRITTEN PERMISSION OF AM EQUIPMENT</p>	Title/Name		Motor, Wiper, 12Nm, 12V, M8 DIN				
		1 PLACE DEC. = N/A		±0.25		2 PLACE DEC. = ±0.01		±0.13			Part Number		212-DDDD	Revision	0	Sheet	2 OF 3
		3 PLACE DEC. = ±0.005		±0.08		4 PLACE DEC. = ±0.0025		N/A			Revision		3/3/2023	Sheet	OF 3		

2

1

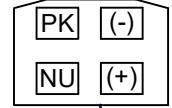
2

1

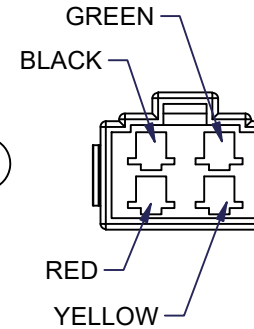
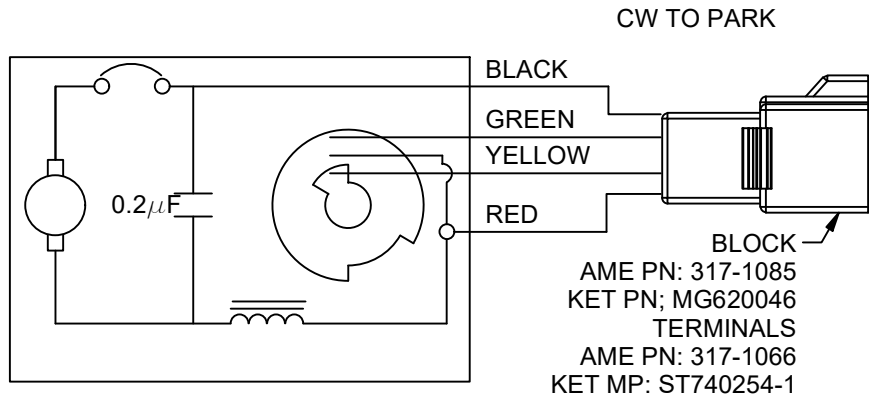


CUSTOMER MATING BLOCK AND TERMINALS
CCW TO PARK

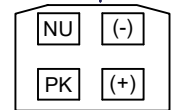
NU - NOT USED
PK - PARK
(-) - GROUND
(+) - BATTERY



MATING BLOCK -
AME PN:317-1065
KET PN: MG 610047
MATING TERMINALS -
AME PN:317-1055
KET PN:ST730268-1



CW TO PARK
NU - NOT USED
(-) - GROUND
(+) - BATTERY
PK - PARK



TERMINAL VOLTAGE	RATED VOLTAGE	12V
	TEST VOLTAGE	13.5V
	VOLTAGE RANGE	10-14V
NO LOAD	SPEED	35 ± 3 RPM
	CURRENT	2A MAX
LOCKED	TORQUE	12Nm
OPERATING CHARACTERISTICS	CURRENT	8.0 AMP
	NOISE LEVEL	55dB MAX
	VIBRATION	2G OF KS R 1034,2,A

Project	N/A	Drafted by	JA 3/3/2023	Revised by		Checked by	RR 3/3/2023	Approved by	AS 3/3/2023	Material Specification	N/A	Finish Specification	PAINT WITH BLACK POLYURETHANE				
OVALS ARE FOR INCOMING INSPECTION CHECKING PROCESSES	UNLESS OTHERWISE SPECIFIED		TOLERANCES IN		INCHES	MM	<p>AM EQUIPMENT Jefferson, Oregon 97352 www.amequipment.com</p> <p>THIS DRAWING IS THE SOLE PROPERTY OF AM EQUIPMENT AND CANNOT BE REPRODUCED IN ANY WAY WITHOUT THE EXPRESS WRITTEN PERMISSION OF AM EQUIPMENT</p>					Title/Name			Motor, Wiper, 12Nm, 12V, M8 DIN		
	1 PLACE DEC. = N/A ±0.25		2 PLACE DEC. = ±0.01 ±0.13		3 PLACE DEC. = ±0.005 ±0.08							4 PLACE DEC. = ±0.0025 N/A		ANGULAR DIM. = ±1° ±1°		DO NOT SCALE DRAWING WORK TO GIVEN DIMENSIONS	
												3/3/2023					

Dimensions are in: MM [INCHES]