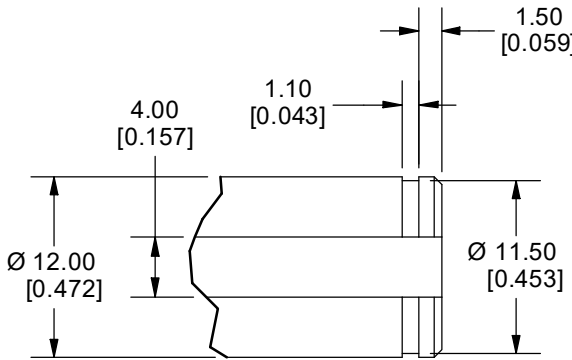


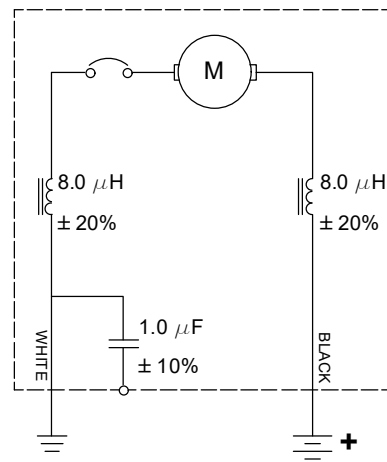
- NOTES:**
- MOTOR DATA TAKEN AT 36.0 VDC.
 - MAGNET HOUSING ORIENTATION MARK PLACED TOWARDS BACK COVER
 - WINDING - 25GA, 38T
 - ENCODER MATING CONNECTOR:
 - HOUSING, TE, 1-1419168-1
 - TERMINAL, TE, 1393366-1
 - POWER WIRES MATING CONNECTOR:
 - HOUSING, APTIV, 12015792
 - TERMINALS, APTIV, 12124580



Dimensions are in: MM [INCHES]	Project	N/A	Drafted by	SB	7/6/2020	Revised by	SB	7/20/2021	Checked by	RR	7/20/2021	Approved by	AS	7/20/2021	Material Specification	N/A	Finish Specification	N/A		
	UNLESS OTHERWISE SPECIFIED	TOLERANCES IN		INCHES	MM															
	1 PLACE DEC. =	N/A	±0.25																	
2 PLACE DEC. =	±0.01	±0.13																		
3 PLACE DEC. =	±0.005	±0.08																		
4 PLACE DEC. =	±0.0025	N/A																		
ANGULAR DIM. =	±1°	±1°																		
DO NOT SCALE DRAWING WORK TO GIVEN DIMENSIONS																				
												402 E Hazel P.O. Box 790 Jefferson, OR 97352 amequipment.com			Title/Name			AME Motor, 36V, 12mm Shaft, 4mm Keyway, Encoder		
															Part Number		Revision		Sheet	
												240-0502		1		1 OF 3				
														7/20/2021						

THIS DRAWING IS THE SOLE PROPERTY OF AM EQUIPMENT AND CANNOT BE REPRODUCED IN ANY WAY WITHOUT THE EXPRESS WRITTEN PERMISSION OF AM EQUIPMENT

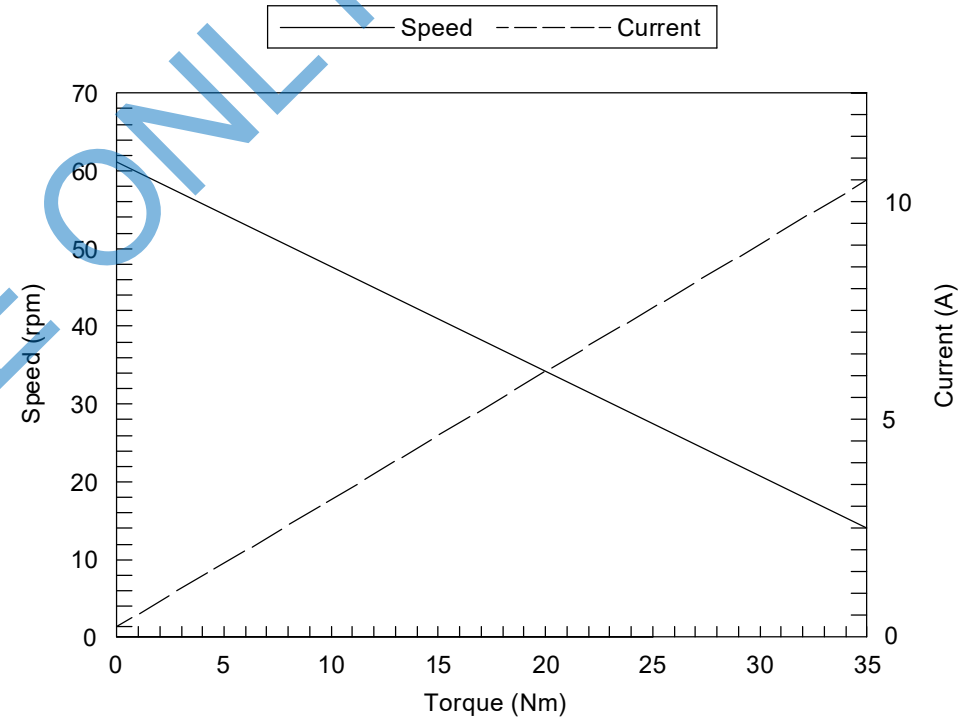
CW & CCW OUTPUT SHAFT ROTATION		
LOAD (Nm)	CURRENT (A)	SPEED (rpm)
NO LOAD	1.5 MAX	50.0 - 70.0
5.0 Nm	3.0 MAX	40.0 - 55.0



APPLICATION REFERENCE:

- FOR HIGHEST DURABILITY USE MOTOR AT OR BELOW PEAK EFFICIENCY TORQUE OF 10Nm.
- STALL CURRENT DRAW ≤15 AMPS AT ROOM TEMPERATURE.
- NOT INTENDED FOR USE UNDER IMPACT LOADING CONDITIONS.

WHITE	BLACK	ROTATION
+	-	CW
-	+	CCW

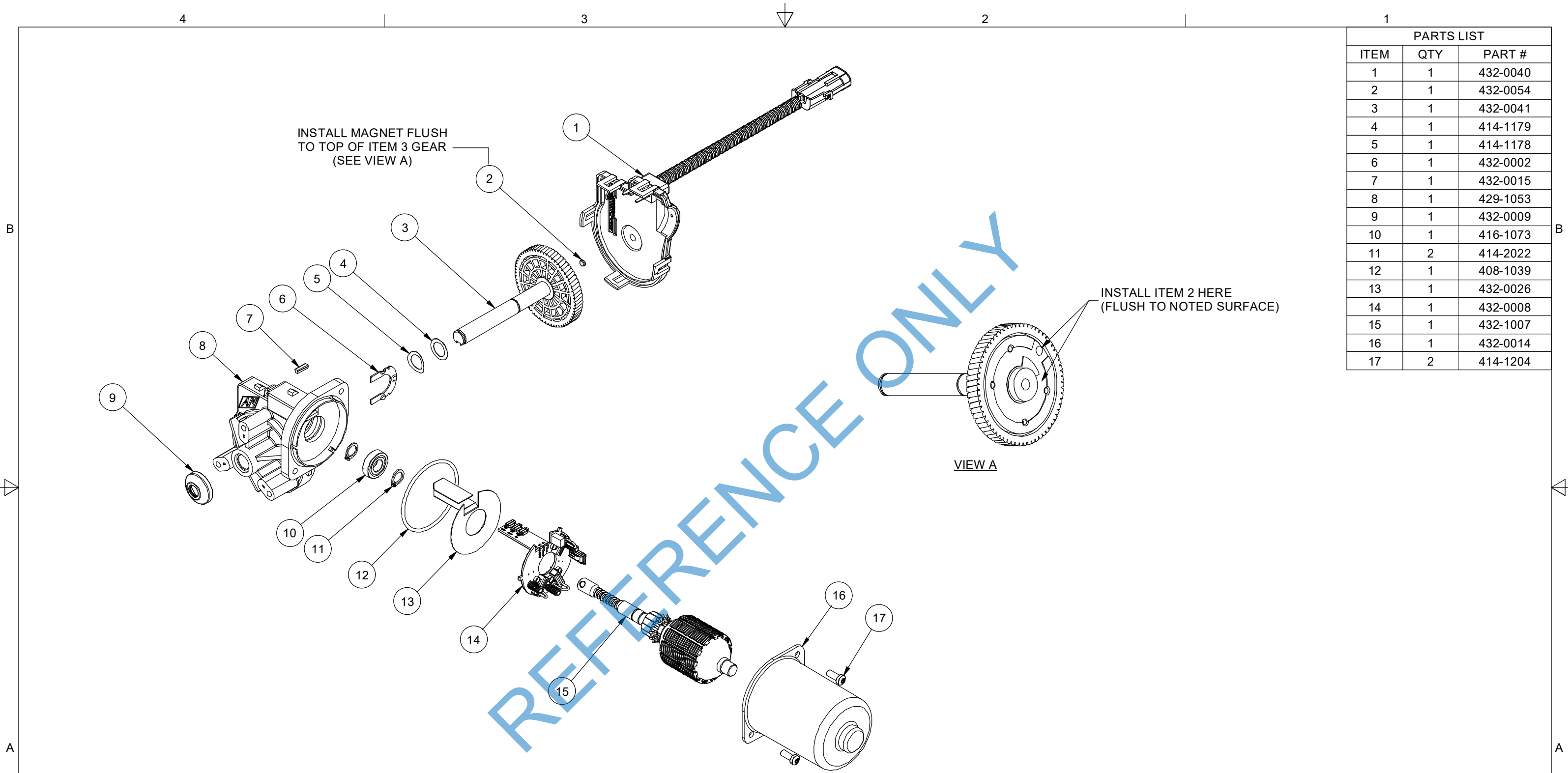


NOTE:

1. ALL DATA TAKEN AT 36.0 VDC
2. DATA PLOT IS GIVEN AS AVERAGE MOTOR PERFORMANCE
3. ARMATURE TO BE WOUND WITH 25AWG x 38 TURNS.

Dimensions are in:
MM [INCHES]

Project	N/A	Drafted by	SB	Revised by	SB	Checked by	RR	Approved by	AS	Material Specification	N/A	Finish Specification	N/A	
			7/6/2020		7/20/2021		7/20/2021		7/20/2021					
OVALS ARE FOR INCOMING INSPECTION CHECKING PROCESSES	UNLESS OTHERWISE SPECIFIED		TOLERANCES IN		INCHES	MM								
	1 PLACE DEC. =	N/A	±0.25											
	2 PLACE DEC. =	±0.01	±0.13											
	3 PLACE DEC. =	±0.005	±0.08											
	4 PLACE DEC. =	±0.0025	N/A											
	ANGULAR DIM. =	±1°	±1°											
	DO NOT SCALE DRAWING WORK TO GIVEN DIMENSIONS													
				AM EQUIPMENT					402 E Hazel P.O. Box 790 Jefferson, OR 97352 amequipment.com		Title/Name AME Motor, 36V, 12mm Shaft, 4mm Keyway, Encoder			
									THIS DRAWING IS THE SOLE PROPERTY OF AM EQUIPMENT AND CANNOT BE REPRODUCED IN ANY WAY WITHOUT THE EXPRESS WRITTEN PERMISSION OF AM EQUIPMENT		Part Number 240-0502		Revision 1 7/20/2021	Sheet 2 OF 3



PARTS LIST		
ITEM	QTY	PART #
1	1	432-0040
2	1	432-0054
3	1	432-0041
4	1	414-1179
5	1	414-1178
6	1	432-0002
7	1	432-0015
8	1	429-1053
9	1	432-0009
10	1	416-1073
11	2	414-2022
12	1	408-1039
13	1	432-0026
14	1	432-0008
15	1	432-1007
16	1	432-0014
17	2	414-1204

REFERENCE ONLY

Dimensions are in: MM [INCHES]	Project	N/A	Drafted by	SB	7/6/2020	Revised by	SB	7/20/2021	Checked by	RR	7/20/2021	Approved by	AS	7/20/2021	Material Specification	N/A	Finish Specification	N/A													
	OVALS ARE FOR INCOMING INSPECTION CHECKING PROCESSES		UNLESS OTHERWISE SPECIFIED				TOLERANCES IN INCHES		MM		1 PLACE DEC. =		N/A		±0.25		Title/Name		AME Motor, 36V, 12mm Shaft, 4mm Keyway, Encoder												
			2 PLACE DEC. =		±0.01		±0.13		3 PLACE DEC. =		±0.005		±0.08		4 PLACE DEC. =		±0.0025		N/A		Part Number		240-0502		Revision		1		Sheet		3 OF 3
DO NOT SCALE DRAWING WORK TO GIVEN DIMENSIONS																			402 E Hazel P.O. Box 790 Jefferson, OR 97352 amequipment.com				THIS DRAWING IS THE SOLE PROPERTY OF AM EQUIPMENT AND CANNOT BE REPRODUCED IN ANY WAY WITHOUT THE EXPRESS WRITTEN PERMISSION OF AM EQUIPMENT				7/20/2021				