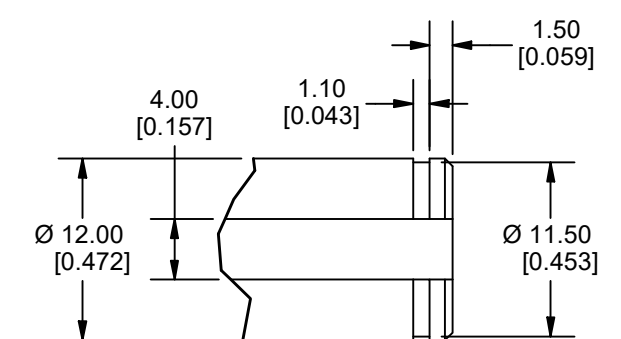


(VIEWS SHOWN WITHOUT WIRE HARNESS FOR CLARITY)

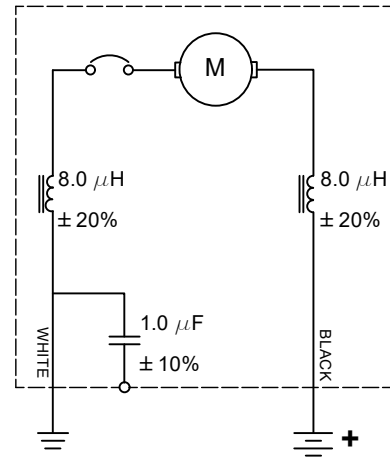


DETAIL A

- NOTES:**
1. MOTOR DATA TAKEN AT 36.0 VDC.
 2. MAGNET HOUSING ORIENTATION MARK PLACED TOWARDS BACK COVER
 3. WINDING - 25GA, 38T
 4. POWER WIRES MATING CONNECTOR:
 - HOUSING, APTIV, 12015792
 - TERMINALS, APTIV, 12124580

Dimensions are in: MM [INCHES]	Project	N/A	Drawn by	SB	Revised by	RR	Checked by	AS	Approved by	AS	Material Specification	N/A	Finish Specification	N/A			
	OVALS ARE FOR INCOMING INSPECTION CHECKING PROCESSES		UNLESS OTHERWISE SPECIFIED				TOLERANCES IN INCHES		MM		 402 E Hazel P.O. Box 790 Jefferson, OR 97352 amequipment.com		Title/Name		AME Motor, 36V, 12mm Shaft, 4mm Keyway, W/O Encoder		
			1 PLACE DEC. = N/A		±0.25		2 PLACE DEC. = ±0.01		±0.13				Part Number		240-0503	Revision	0
		3 PLACE DEC. = ±0.005		±0.08		4 PLACE DEC. = ±0.0025		N/A		THIS DRAWING IS THE SOLE PROPERTY OF AM EQUIPMENT AND CANNOT BE REPRODUCED IN ANY WAY WITHOUT THE EXPRESS WRITTEN PERMISSION OF AM EQUIPMENT		10/2/2020					

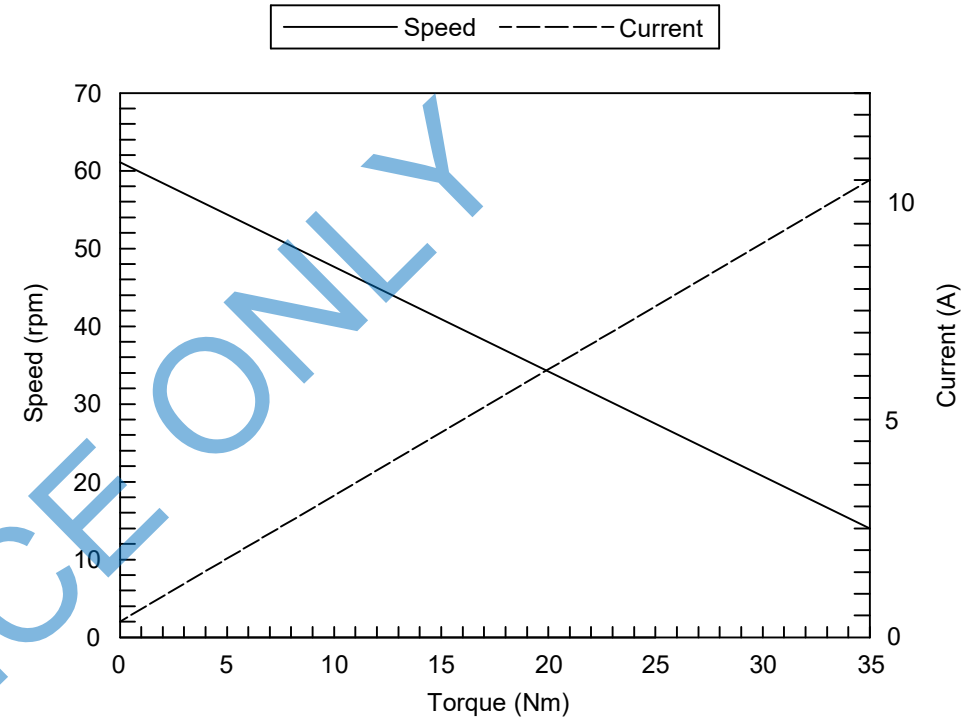
CW & CCW OUTPUT SHAFT ROTATION		
LOAD (Nm)	CURRENT (A)	SPEED (rpm)
NO LOAD	1.5 MAX	50.0 - 70.0
5.0 Nm	3.0 MAX	40.0 - 55.0



APPLICATION REFERENCE:

- FOR HIGHEST DURABILITY USE MOTOR AT OR BELOW PEAK EFFICIENCY TORQUE OF 10Nm.
- STALL CURRENT DRAW \leq 15 AMPS AT ROOM TEMPERATURE.
- NOT INTENDED FOR USE UNDER IMPACT LOADING CONDITIONS.

WHITE	BLACK	ROTATION
+	-	CW
-	+	CCW



NOTE:

1. ALL DATA TAKEN AT 36.0 VDC
2. DATA PLOT IS GIVEN AS AVERAGE MOTOR PERFORMANCE
3. ARMATURE TO BE WOUND WITH 25AWG x 38 TURNS.

REFERENCE ONLY

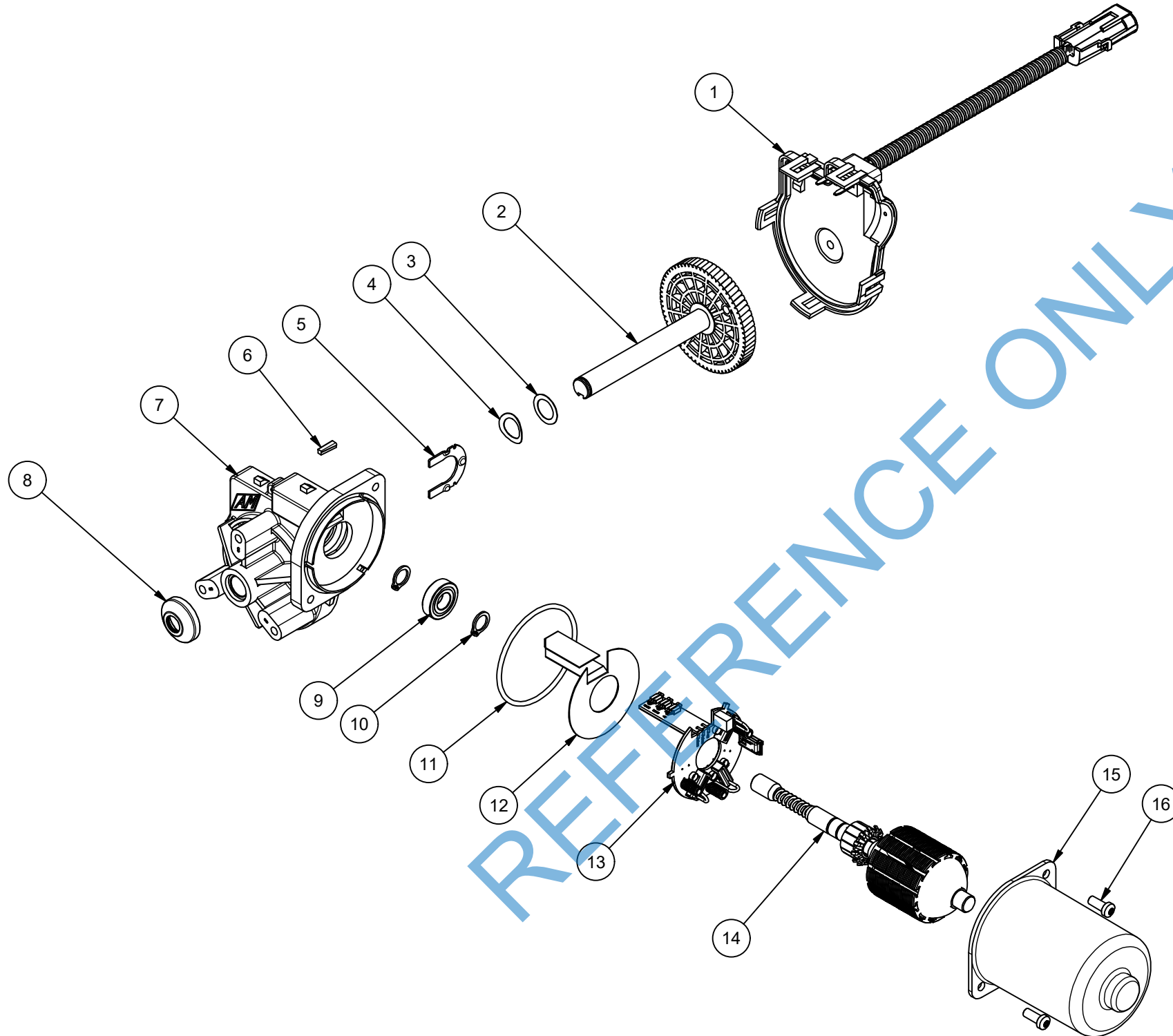
Dimensions are in:
MM [INCHES]

Project	N/A	Drawn by	SB	Revised by		Checked by	RR	Approved by	AS	Material Specification	N/A	Finish Specification	N/A
			7/6/2020				10/2/2020		10/2/2020				
		UNLESS OTHERWISE SPECIFIED		TOLERANCES IN		INCHES		MM				Title/Name	
		1 PLACE DEC. =		N/A		±0.25						AME Motor, 36V, 12mm Shaft, 4mm Keyway, W/O Encoder	
		2 PLACE DEC. =		±0.01		±0.13						Part Number	
		3 PLACE DEC. =		±0.005		±0.08						240-0503	
		4 PLACE DEC. =		±0.0025		N/A						Revision	
		ANGULAR DIM. =		±1°		±1°						0	
		DO NOT SCALE DRAWING		WORK TO GIVEN DIMENSIONS								Sheet	
												2 OF 3	
												10/2/2020	

AM EQUIPMENT

402 E Hazel
P.O. Box 790
Jefferson, OR 97352
amequipment.com

THIS DRAWING IS THE SOLE PROPERTY OF AM EQUIPMENT AND CANNOT BE REPRODUCED IN ANY WAY WITHOUT THE EXPRESS WRITTEN PERMISSION OF AM EQUIPMENT



PARTS LIST		
ITEM	QTY	PART #
1	1	432-0047
2	1	432-0041
3	1	414-1179
4	1	414-1178
5	1	432-0002
6	1	432-0015
7	1	429-1053
8	1	432-0009
9	1	416-1073
10	2	414-2022
11	1	408-1039
12	1	432-0026
13	1	432-0008
14	1	432-1006
15	1	432-0014
16	2	414-1204

Dimensions are in: MM [INCHES]	Project	Drawn by	Revised by	Checked by	Approved by	Material Specification	Finish Specification					
	N/A	SB 7/6/2020		RR 10/2/2020	AS 10/2/2020	N/A	N/A					
	OVALS ARE FOR INCOMING INSPECTION CHECKING PROCESSES		UNLESS OTHERWISE SPECIFIED TOLERANCES IN INCHES MM 1 PLACE DEC. = N/A ±0.25 2 PLACE DEC. = ±0.01 ±0.13 3 PLACE DEC. = ±0.005 ±0.08 4 PLACE DEC. = ±0.0025 N/A ANGULAR DIM. = ±1° ±1° DO NOT SCALE DRAWING WORK TO GIVEN DIMENSIONS				402 E Hazel P.O. Box 790 Jefferson, OR 97352 amequipment.com					
Title/Name AME Motor, 36V, 12mm Shaft, 4mm Keyway, W/O Encoder							Part Number 240-0503		Revision 0		Sheet 3 OF 3	
							10/2/2020					

REFERENCE ONLY