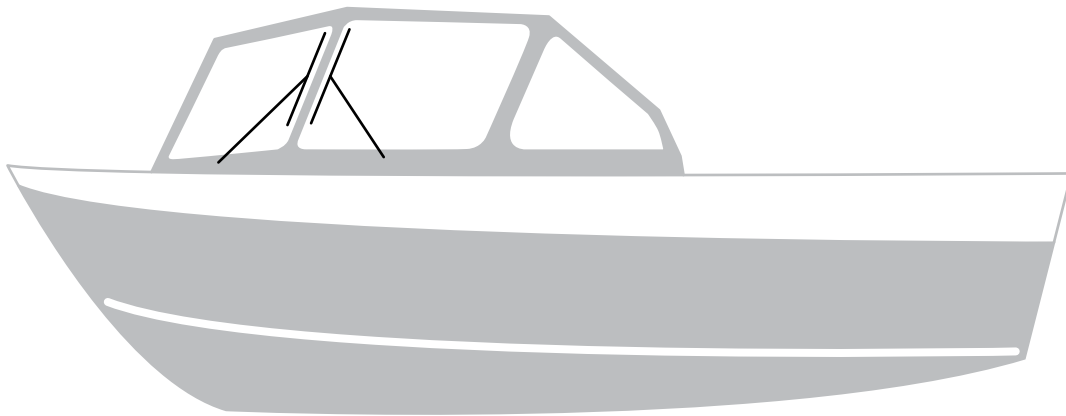




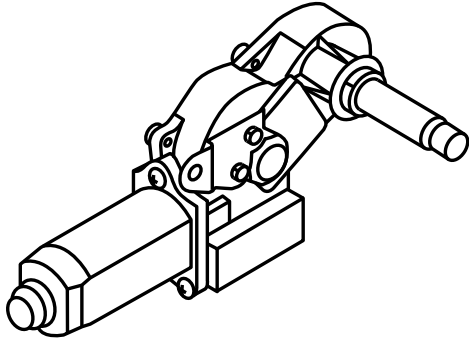
Marine Wiper System Kit

212 Radial

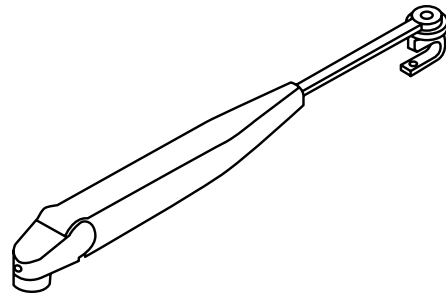


Kit Includes:

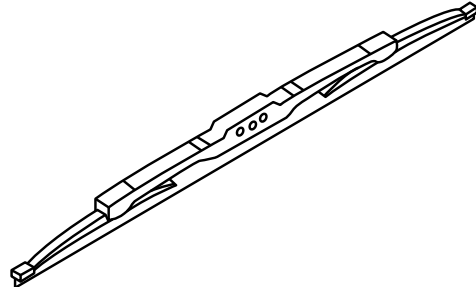
1 DC Gear Motor Assembly
(212-2201 for fiberglass hull kit;
212-2001 for aluminum hull kit)



1 Wiper Arm (352-2005)



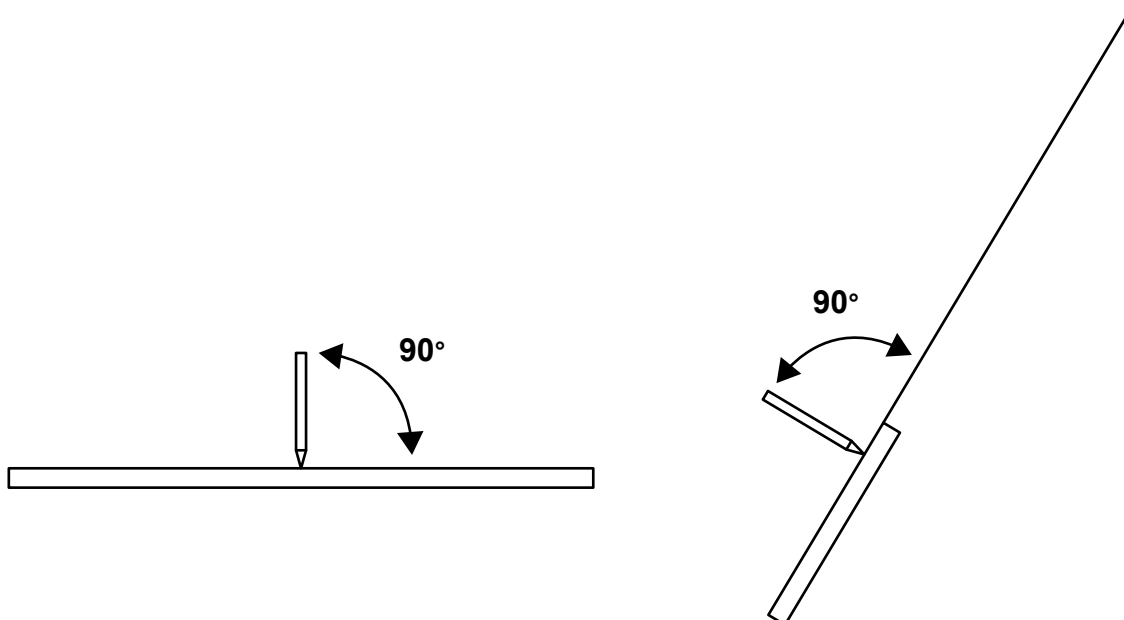
1 Wiper Blade (302-1160)



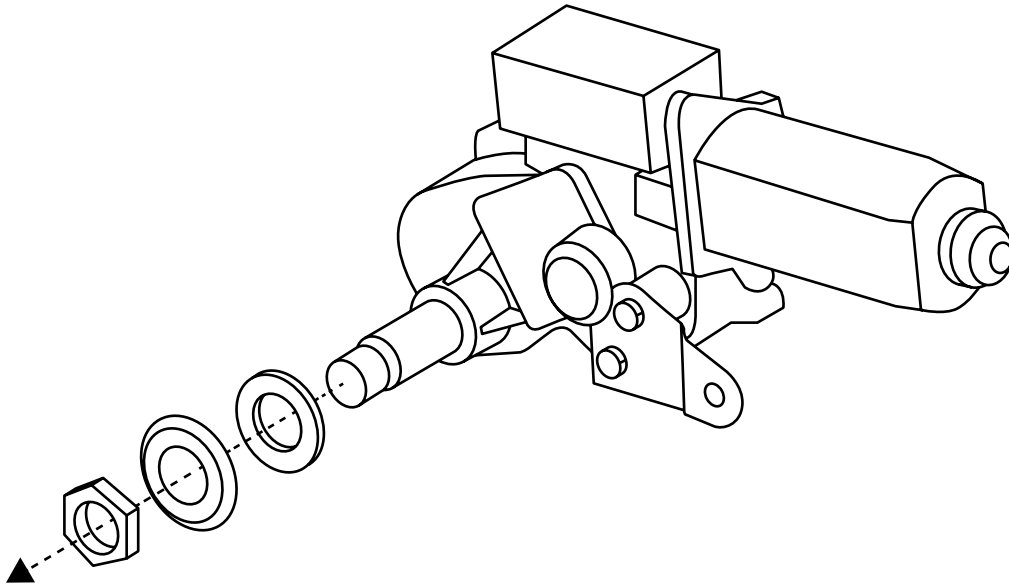
NOTE

It is very important the wiper motor remain in the parked position. Do not start the wiper system until arms and blades are installed.

1. **Skip this step if you are replacing an existing windshield wiper system.** Mark location for pivot shaft on outside of bulkhead. Drill a 17 mm (11/16") mounting hole through bulkhead, perpendicular to windshield at marked location. Mark corresponding location for motor assembly mounting tab hole. We recommend using a stainless steel mounting bolt and nut, up to 6 mm (1/4"), (not included) for this attachment. Drill an appropriately sized hole for your hardware through bulkhead, perpendicular to windshield at marked location.

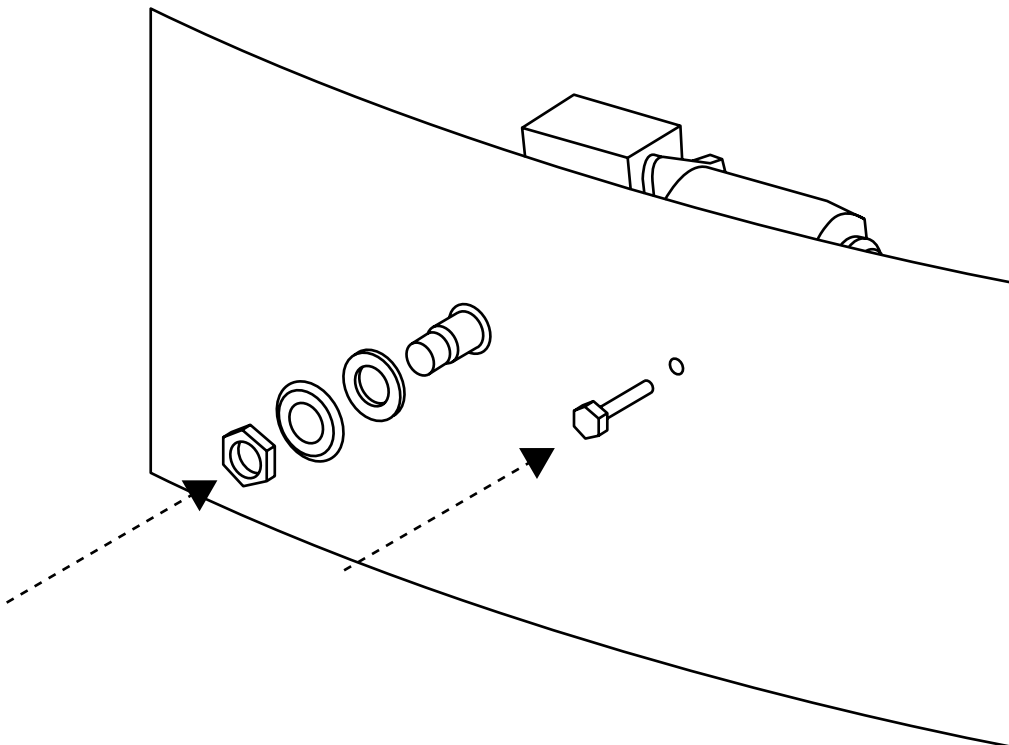


2. Remove nut, washer, and rubber seal from motor assembly (212-2201).

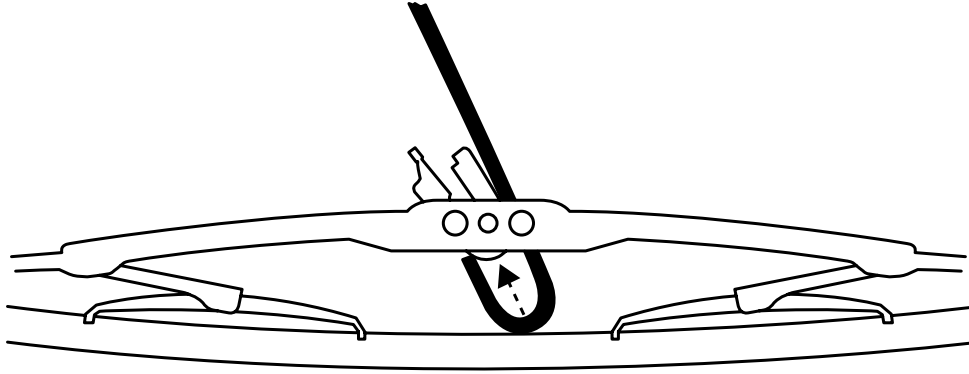


3. From inside boat, insert motor assembly pivot shaft through 17 mm (11/16") drilled hole and align motor assembly mounting tab hole with other drilled hole.

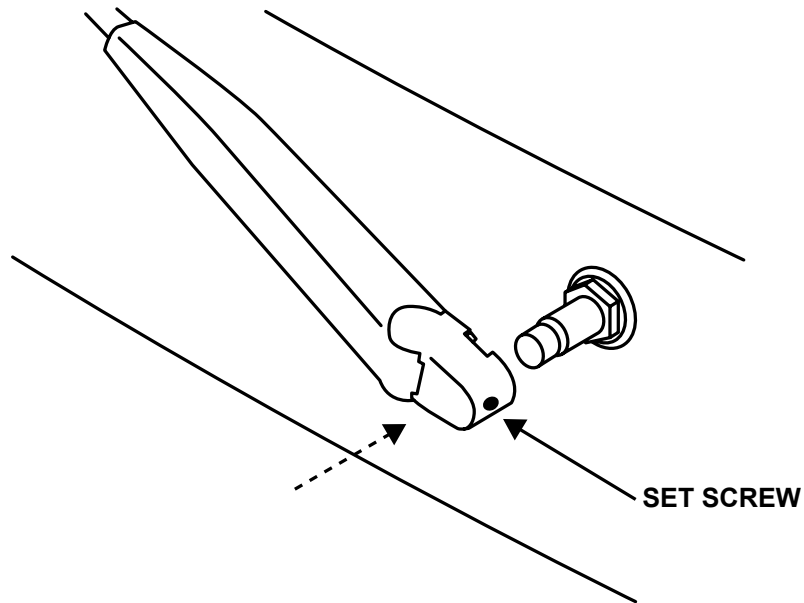
4. Reinstall rubber seal, washer, and nut onto motor assembly pivot shaft and torque M16 nut to 11 Nm (8 lb.ft) Install mounting hardware (bolt or screw, not included) to secure motor assembly mounting tab to bulkhead, either from inside or outside hull. Seal holes in bulkhead around pivot shaft and mounting hardware with high-quality urethane caulking from motor side of bulkhead.



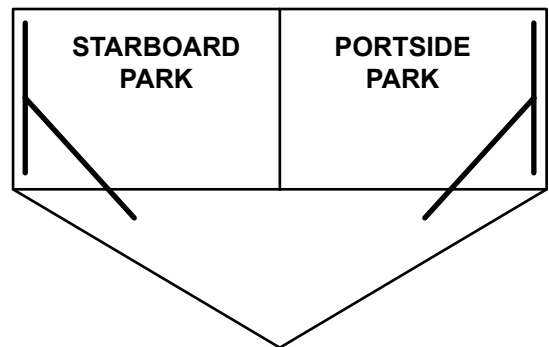
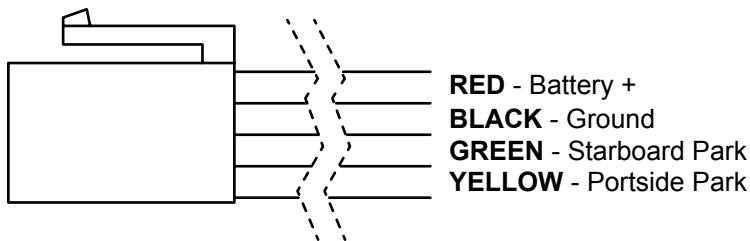
5. Attach the wiper blade (302-1160) to the wiper arm (352-2005) by hooking J-shaped end of arm around wiper blade adapter (with tab end of adapter facing open end of J) until it clicks into place.



6. Determine your preferred windshield wiper park position with wiper blade parallel to vertical window edge. Loosen set screw in arm mounting head. To install wiper arm, place arm mounting head over pivot shaft with arm in desired park position and tighten set screw to 4.5 Nm (40 lb.in).



7. Wire your windshield wiper system.



NOTE Park positions are referenced from an “in front of the bow looking at windshield” view.

NOTE If wipers are top mounted, park positions are opposite (yellow is starboard and green is portside).