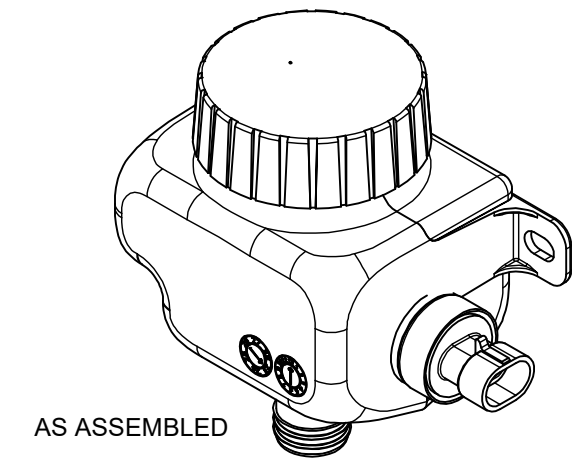
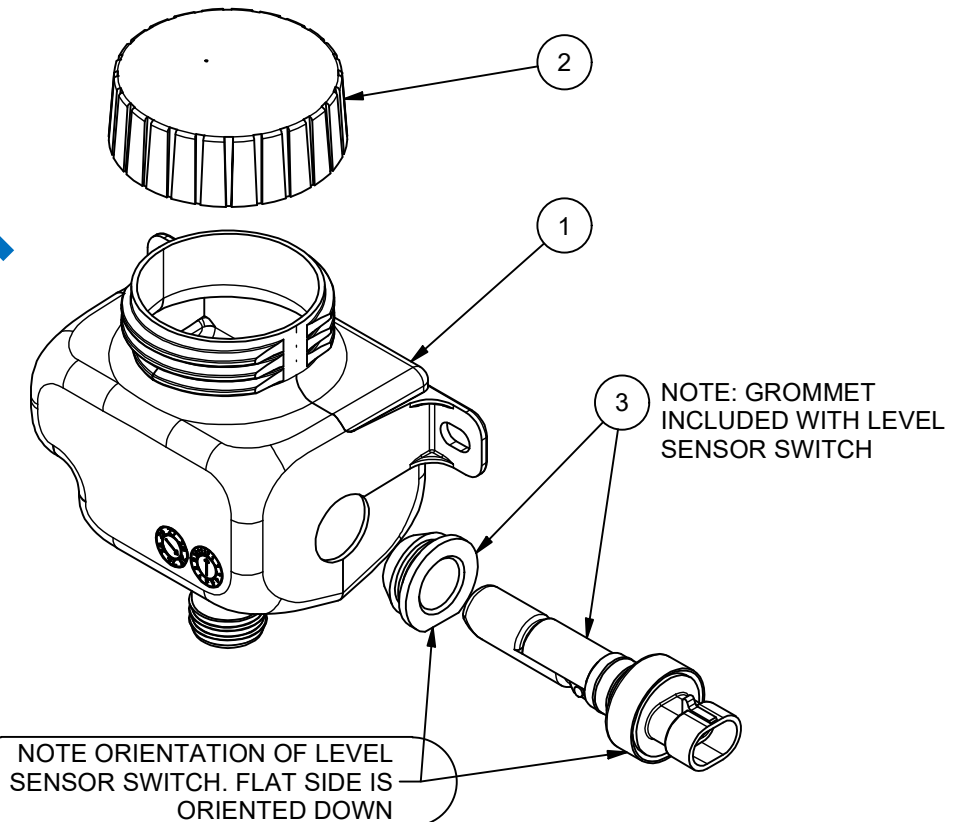
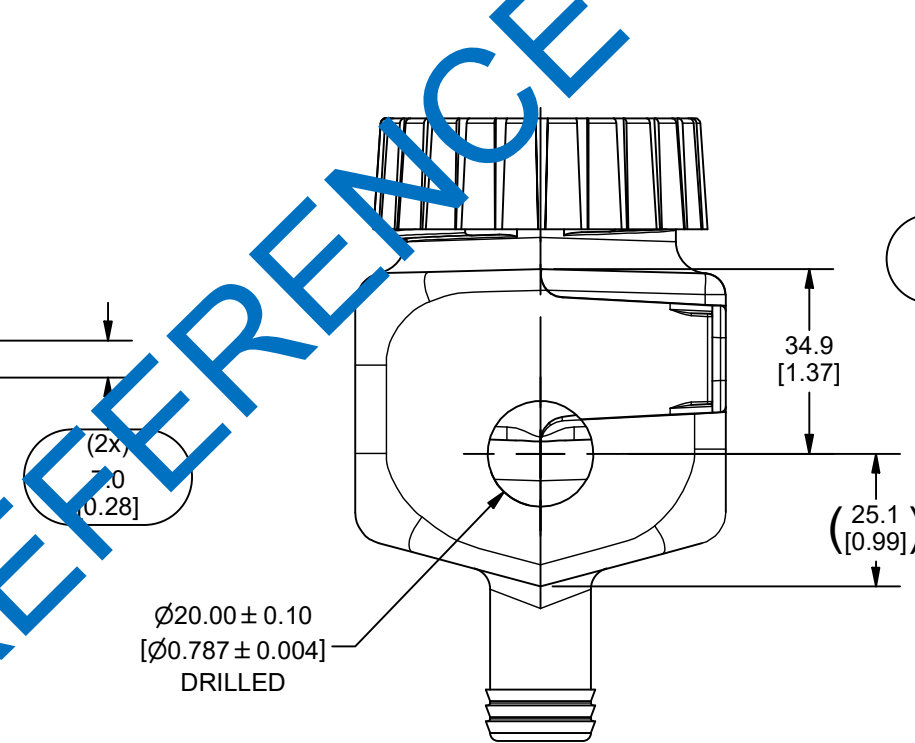
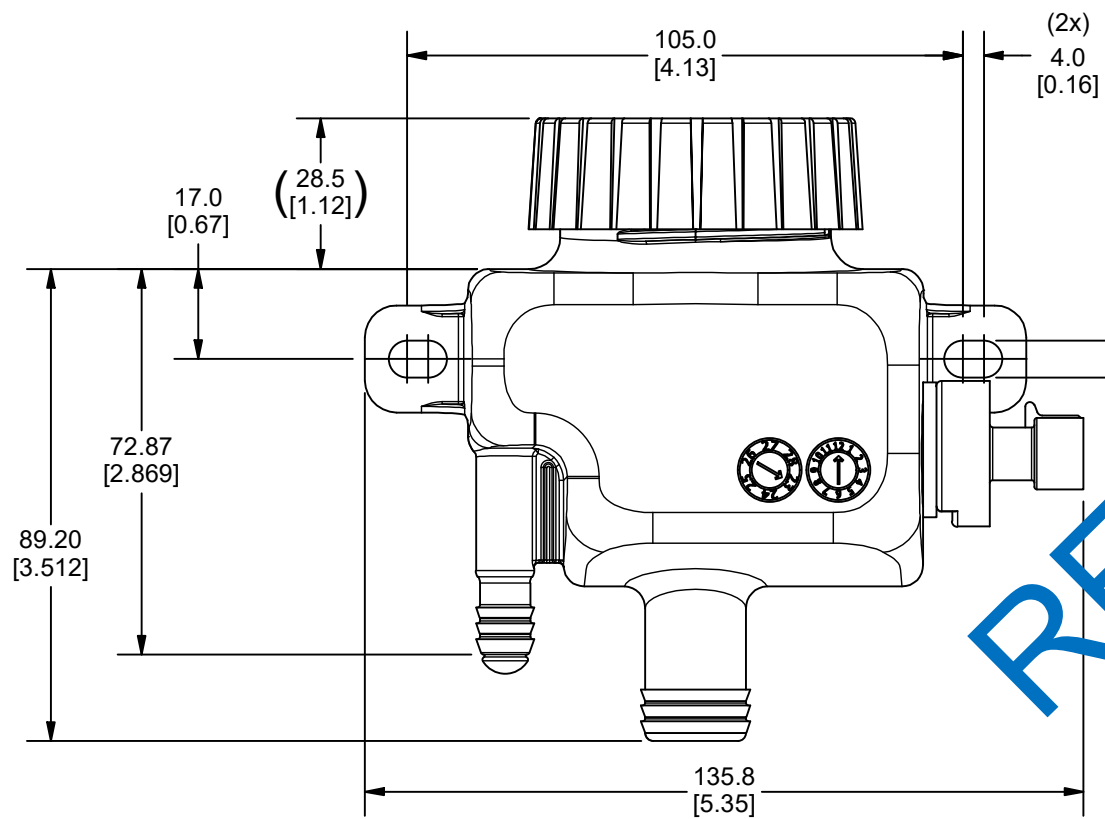
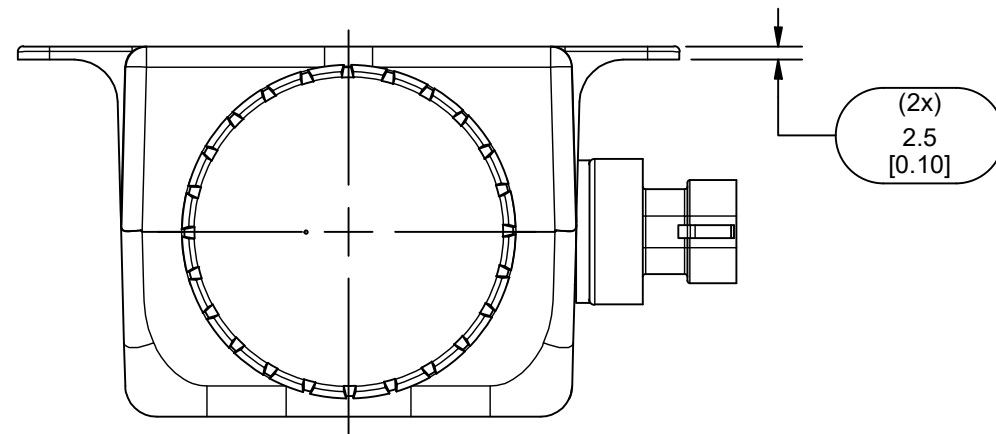


- NOTES:**
1. ASSEMBLED BOTTLE TO PASS PNEUMATIC PRESSURE TEST. BOTTLE TO HOLD  $5 \pm 1$  PSI ( $35 \pm 7$  kPa) FOR AT LEAST 5 SECONDS WITHOUT LEAKAGE
  2. NOMINAL WALL THICKNESS: 1.6mm [0.06"] / MINIMUM WALL THICKNESS: 1.1mm [0.04"]
  - 3 BOTTLE WEIGHT (BEFORE ASSEMBLY):  $46.8g \pm 9.4g$

PARTS LIST			
ITEM	QTY	PART #	DESCRIPTION
1	1	312-1060	Fluid Reservoir, 0.3L, Dual Bottom Hose Barb
2	1	406-1055	Lid, Threaded, 57mm Dia, Vented, No Markings
3	1	406-1053	Level Sensor Switch, HMC # HS20012A, With Grommet



REFERENCE ONLY

Dimensions are in:  
MM [INCHES]

Project	N/A	Drafted by	RDR	Revised by	JA	Checked by	RDR	Approved by	AS	Material Specification	N/A	Finish Specification	N/A
			1/5/2023		7/24/2023		7/24/2023		7/24/2023				
OVALS ARE FOR INCOMING INSPECTION CHECKING PROCESSES	UNLESS OTHERWISE SPECIFIED		TOLERANCES IN		INCHES		MM		<p>402 E Hazel P.O. Box 790 Jefferson, OR 97352 amequipment.com</p> <p>THIS DRAWING IS THE SOLE PROPERTY OF AM EQUIPMENT AND CANNOT BE REPRODUCED IN ANY WAY WITHOUT THE EXPRESS WRITTEN PERMISSION OF AM EQUIPMENT</p>				
	1 PLACE DEC. =	N/A	±0.25										
	2 PLACE DEC. =	±0.01	±0.13										
	3 PLACE DEC. =	±0.005	±0.08										
4 PLACE DEC. =	±0.0025	N/A											
ANGULAR DIM. =	±1°	±1°											
DO NOT SCALE DRAWING			WORK TO GIVEN DIMENSIONS										
Title/Name		Reservoir, 0.3L, Assm, with Level Sensor											
Part Number		312-0301		Revision		0		Sheet		1 OF 1			
				7/24/2023									

REVISION HISTORY

DATE	REV	DESCRIPTION	APPROVED
7/24/2023	0	Initial Release	AS