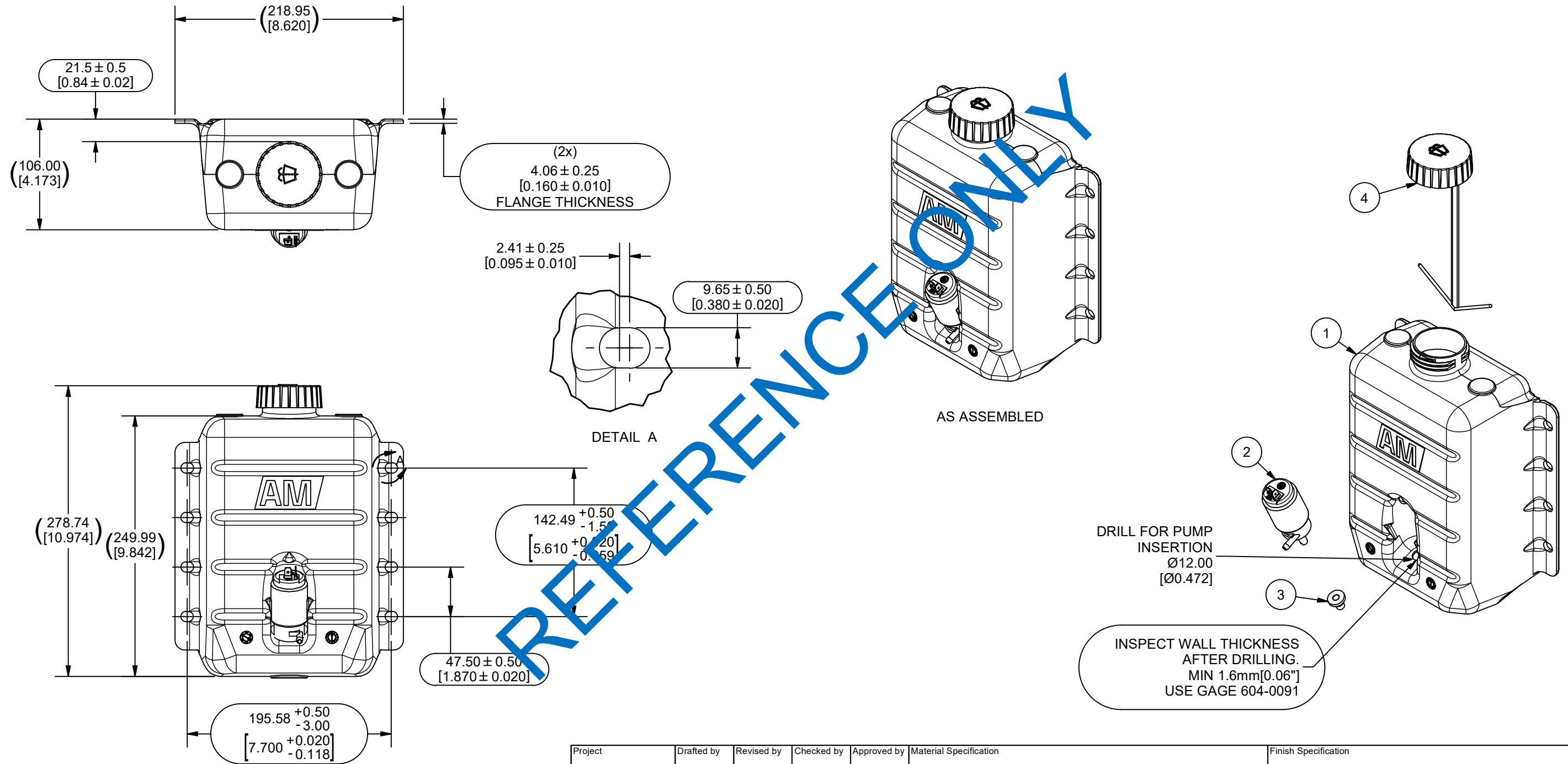


NOTES:

1. ASSEMBLED BOTTLE TO PASS PNEUMATIC PRESSURE TEST. BOTTLE TO HOLD 5± 1 PSI (35 ± 7 kPa) FOR AT LEAST 5 SECONDS WITHOUT LEAKAGE
2. NOMINAL WALL THICKNESS: 2.2mm [0.09"] / MINIMUM WALL THICKNESS: 1.6mm [0.06"]
3. BOTTLE WEIGHT (BEFORE ASSEMBLY): 530g ± 55g
4. ALL DIMENSIONS FOR SIMILAR FEATURES TYP

PARTS LIST			
ITEM	QTY	PART #	DESCRIPTION
1	1	312-1400	Reservoir, Washer Bottle, 4qt
2	1	406-1058	Pump, Washer Bottle, 12v, HMC P/N: HS-231G 12v
3	1	406-1026	Grommet, Washer Bottle, HMC, 12 and 24 volt (HMC P/N: 10044)
4	1	406-1051	Lid, Washer Bottle, 57mm Dia, Vented with Tether



REFERENCE ONLY

REVISION HISTORY			
DATE	REV	DESCRIPTION	APPROVED
6/13/2023	2	Tolerances corrected, Note for TYP added	AS
11/2/2023	2	Cap tolerance updated to blow molding requirements (JA)	

Dimensions are in: MM [INCHES]	Project	Drafted by	Revised by	Checked by	Approved by	Material Specification	Finish Specification
	N/A	JA	JA	RR	AS	N/A	N/A
		3/13/2023	11/2/2023	11/2/2023	11/2/2023		
	UNLESS OTHERWISE SPECIFIED	TOLERANCES IN					
		INCHES	MM				
	1 PLACE DEC. =	N/A	±0.25				
	2 PLACE DEC. =	±0.01	±0.13				
	3 PLACE DEC. =	±0.005	±0.08				
	4 PLACE DEC. =	±0.0025	N/A				
	ANGULAR DIM. =	±1°	±1°				
	DO NOT SCALE DRAWING WORK TO GIVEN DIMENSIONS						
			402 E Hazel P.O. Box 790 Jefferson, OR 97352 amequipment.com		Title/Name		
Assy, Washer Bottle, 4qt, 12v							
Part Number		Revision		Sheet			
312-1402		2		1 OF 1			
		11/2/2023					

THIS DRAWING IS THE SOLE PROPERTY OF AM EQUIPMENT AND CANNOT BE REPRODUCED IN ANY WAY WITHOUT THE EXPRESS WRITTEN PERMISSION OF AM EQUIPMENT