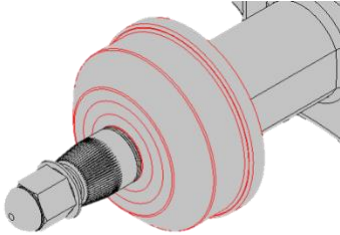


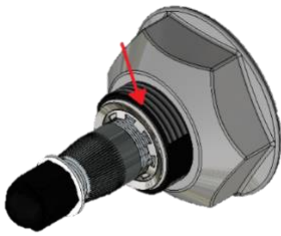
Seals and Spacers Reference

for 2D and 2P Wiper Systems



Section 1 – For Seal 407-1149 Fitment

1. With the system installed, count the number of exposed threads. (See Below)



2. If less than 4 threads are exposed, your system is mounted correctly and the seal will function properly.
 - a. If 4 – 6 threads are exposed, spacer PN 407-1115 is required for proper seal function.
 - i. Recommended for double pivot systems, (2D, 4P) but may also be used for single pivot systems if space allows. (See Sheet 2 for Dimensions)
 - b. If 6 or more threads are exposed, spacer PN 430-1007 is required for proper seal function. (use 1x spacer for each shaft)

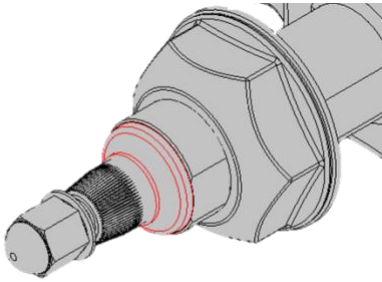


407-1115



430-1007

3. If seal is impossible to fit securely because of the application, applying sealant around the edge of the seal and nut is recommended to prevent water ingress.

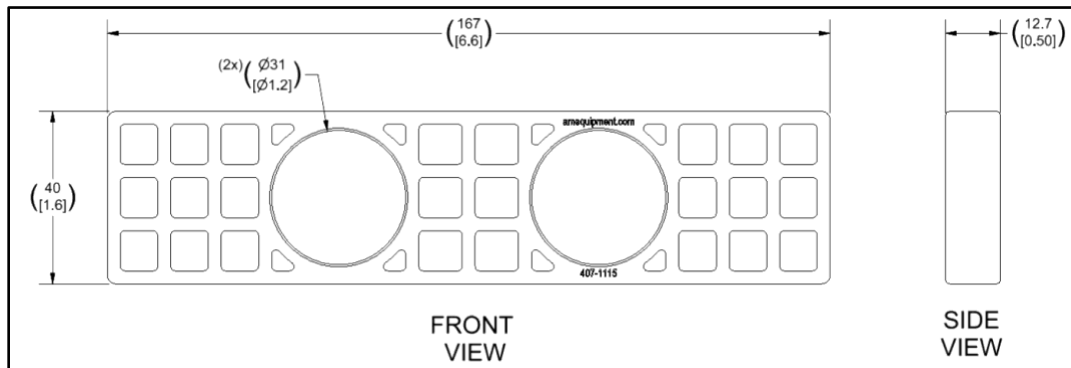


Section 2 – For Seal 408-1034 Fitment

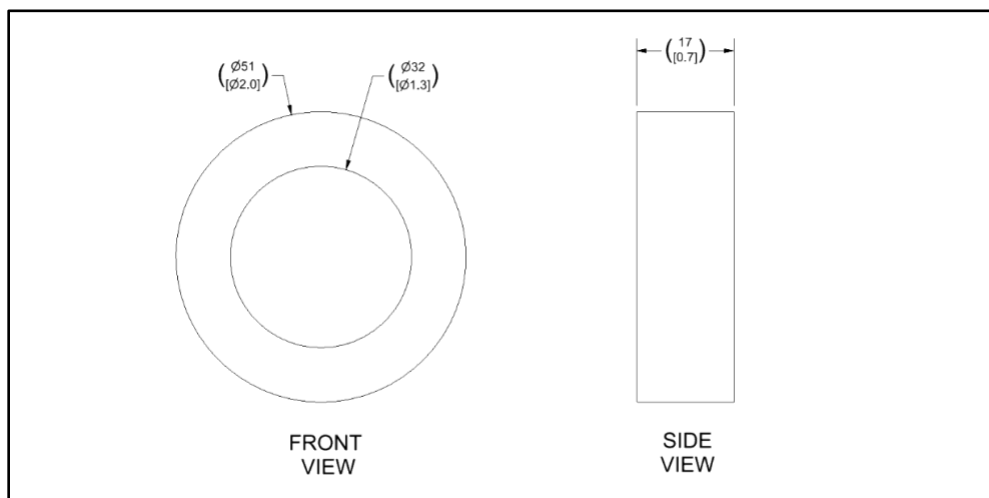
1. With the system installed, ensure that the seal is seated firmly against the black, pivot shaft body. There should be no visible gaps between the seal and the steel pivot shaft.
 - a. If there is a visible gap between the nut/fiber washer and the cab, applying sealant around the edge of the nut is recommended to prevent water ingress.

Section 3 – Spacer Dimensions (For Reference Only)

1. Spacer 407-1115



2. Spacer 430-1007



3. Questions? Need assistance? Call AME at 541-327-1546 for help.