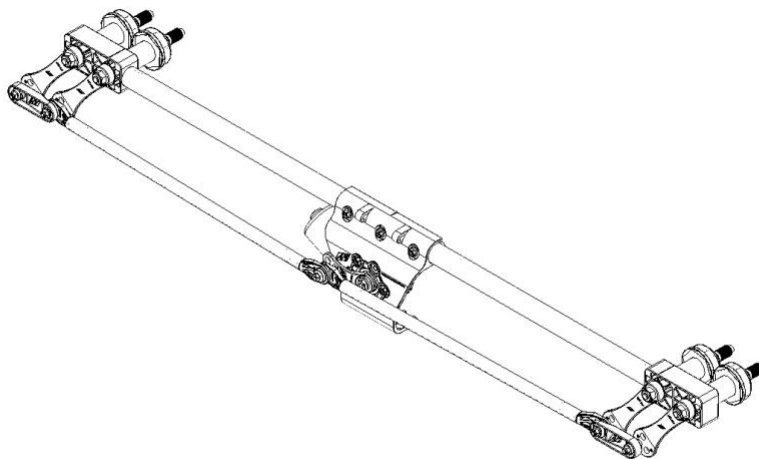


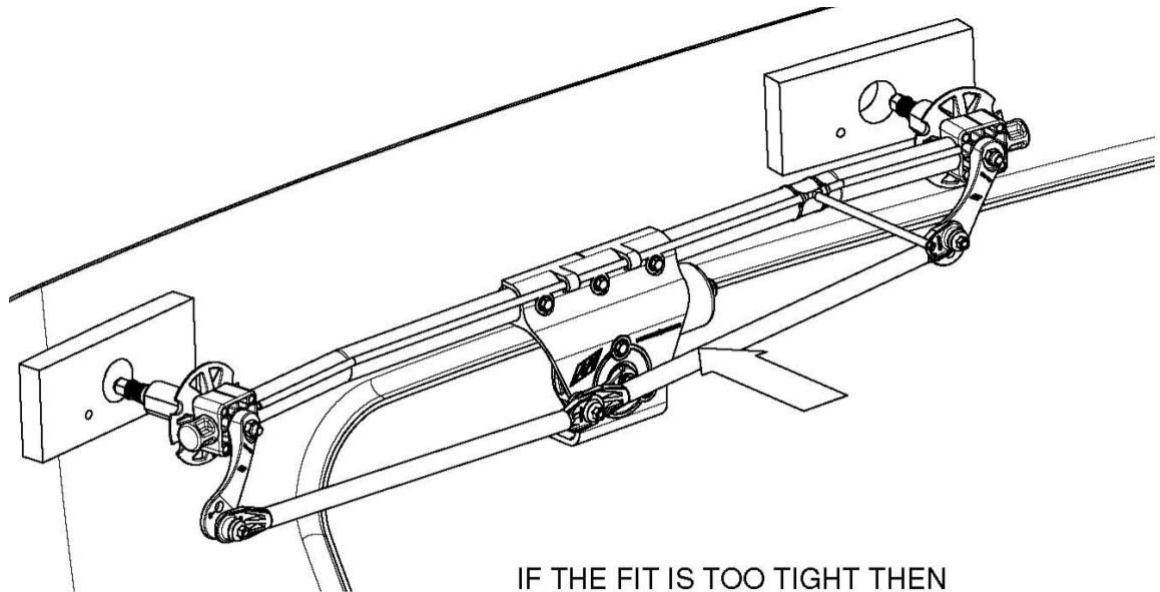


2P Wiper System Installation Instructions



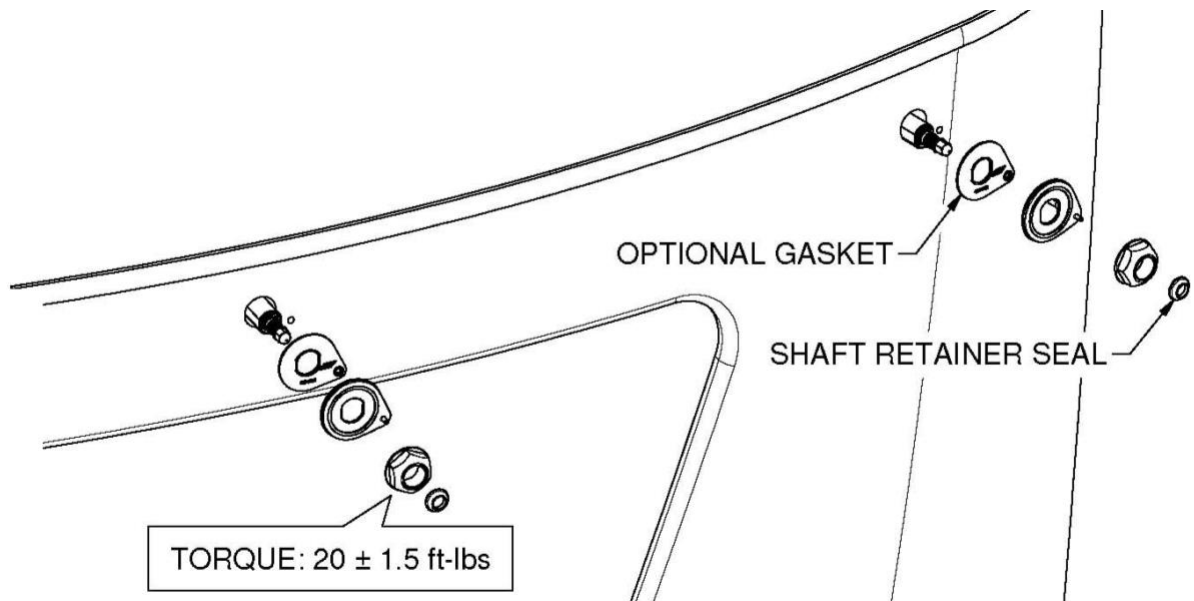
Note: It is very important that the wiper motor remains in the parked position, do not start the wiper system until the arms and blades are installed.

1. Visually inspect the 2P Wiper System for shipping/storage damage & for completeness:
 - a. Nothing is broken or disconnected.
 - b. No slop in the pivot shafts.
 - c. Pivot shaft hardware, mounting spacers, & bulkhead fittings (optional) are on-hand.
2. Mark location of pivot shaft holes.
 - a. Refer to the wipe pattern layout (if applicable) for the location of the pivot holes with relation to the centerline and from the edge of the glass.
3. Drill the required holes using a 31.0 mm [1.25 in] hole saw, or equivalent, perpendicular to the glass plane.
4. Fit the 2P Wiper System with the pivot shafts protruding through the drilled holes.



IF THE FIT IS TOO TIGHT THEN
ADJUST THE HOLES ACCORDINGLY

5. Install all system hardware.
 - a. If pivot shaft hardware includes fluid fittings, locate and drill holes prior to hardware installation.
6. For proper seal fitment, refer to “Seals and Spacers Reference” on the AME website.

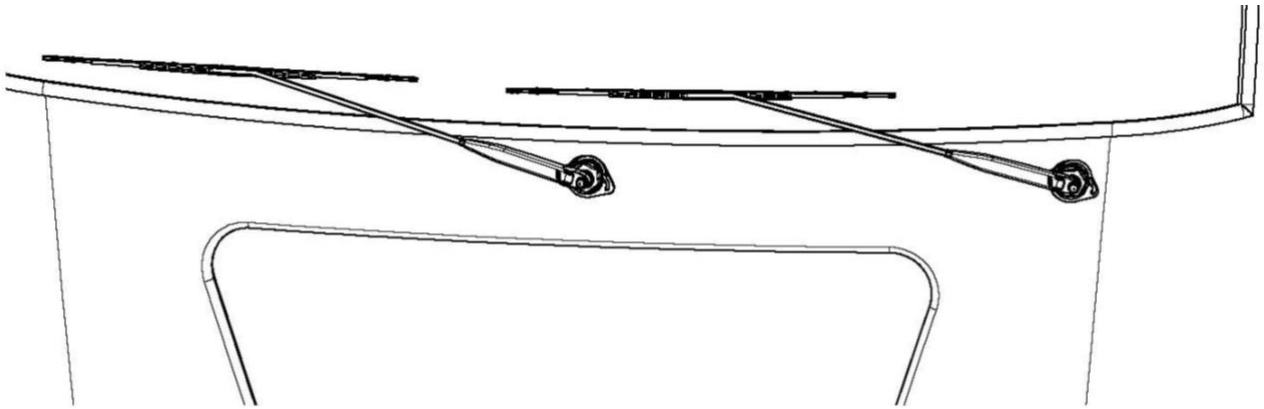


Note:

Ensure wiper switch is in off position before connecting wire harness to motor assembly.

7. Plug the wire harness into the motor connector.
8. For bulkhead fitting 313-1025 (90° fitting), drill a 10mm hole.
9. Install the bulkhead fitting into the drilled hole.
10. Connect the washer hose from the washer fluid bottle to the bulkhead fitting.
11. Assemble the wiper blades to the wiper arms.

12. Install the arm/blade assembly onto the pivot shafts aligning the assembly to the desired park position. Reference the wiper layout for the park position. (if applicable)



GLASS MUST BE WET TO CORRECTLY
CONFIRM PARK LOCATION

Note:

For 2P Wiper Systems with washer hoses attached to the wiper arms, leave enough hose so that the arm will not pull it off or kink the hose during operation.

13. Install the pivot shaft nuts to secure the arms.
 - a. For Tapered Knurl shafts, tighten the acorn nuts PN 407-1010 to 8 ft-lbs [11 Nm]
 - b. For M10 DIN shafts, tighten both nuts PN 414-2042 to 25 ft-lbs [34 Nm]
 - c. For HD shafts (Straight Spline), tighten both SHC screws PN 414-1205 to 7 ft-lbs [9 Nm]
14. Operate the 2P Wiper Systems on low and high speeds on wet glass with the vehicle running. (The vehicle must be running to ensure that the wiper motor is at the proper voltage.)
15. Verify that the sweep pattern is correct and parked in the appropriate location. Wiper blades must not hit any of the moldings. If the sweep pattern is incorrect, or the blades hit the molding, remove the nuts, and reposition the arms again.
16. The system is now properly installed. If there are any concerns or questions, call 541-327-1546 for technical assistance.